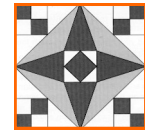


Quilt-A-Gram



Newsletter Editor: Lora Brinkman

BOONESLICK TRAIL QUILTERS' GUILD



Starlight Piecemakers Chapter Meeting

Thursday, January 9, 2020
Doors Open: 6:00pm
Meeting: 7:00pm
Fairview United Methodist Church

The Starlight Chapter January meeting will be on January 9th, yes January 9th. We thought that the first Thursday was too close to New Years Day and people might still be traveling so, I repeat: we will be meeting on January 9th.

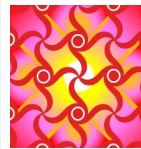
We will have our very own Trina Pratt as the speaker. She will be giving a presentation called, Thread, Needles, Tension. I made a remark one time about how I have always wanted to know more about thread but I didn't think anyone had a class on a subject like that. Trina spoke up and said that she had taught her former guild on that subject. We talked her into coming to the evening meeting even though she is a day person and give her presentation, TNT. I hope you will be there to learn everything about the little things that we use for every sewing project, the thread, needles and the tension that keeps every stitch together.

Bring your Show and Tell and join us on January 9th.

Robin Heider



HAPPY NEW YEAR



Day Chapter Meeting

Monday, January 6, 2020
Sit N Sew: 9:00am
Meeting: 1:00pm
Fairview United Methodist Church

The December Holiday Lunch and Auction was, in my opinion, a rousing success. I think everyone left the festivities in a warm holiday mood. Thanks to all of you for your contributions and your generosity. Not knowing what to expect since I had never attended an auction here before, I was a little nervous about the details. But that Monday morning, people started filing in one by one and pitching in with their donations, food, and manual labor. This is really a special group. Our program chair, Judi Kirkpatrick, will fill you in on the details, but it's safe to say all was well worth the effort.

A special thanks to our auctioneer and CEO, Alice Leeper, Judi Kirkpatrick, Barb Nixon, Sarah Briggs and her hospitality crew, and Hank Botts and her elves for all their efforts. I wish you a safe and happy December Holiday Season.

January's program will be our own Bettina Havig and her "Traditional Group" of eight ladies who will be sharing a program on "First, Last, and Middle". They will have examples of their quilting careers to share with us starting with their first project, their latest, and something special from the time in between. It's always a treat to see the beautiful work created by the talent in this group. I don't want to miss this program! See you there.

- Trina



Quilt-A-Gram

Published monthly by Booneslick Trail Quilters' Guild, a not-for-profit organization, established in 1978, and dedicated to educating its members and the community in the art and appreciation of quilt making.

BTQG BOARD OF DIRECTORS 2019-2020

Executive Board Members/Elected

| | | |
|-----------------------|-----------------|------------------|
| CEO | Alice Leeper | 573-489-1458 (C) |
| Vice CEO | Betty White | 573-999-0118 (C) |
| Secretary | Trishia Bowen | 573-476-6607 (H) |
| Treasurer | Martha Eberhard | 573-356-0311 (C) |
| President-Day Chapter | Trina Pratt | 775-770-4645 (C) |
| President-Starlight | | |
| Piecemakers | Robin Heider | 573-529-5267 (C) |
| Past CEO | Hank Botts | 573-424-1190 (C) |

Board Members/Appointed Standing Committee Chairs

| | | |
|-----------------------|------------------|------------------|
| Membership | Maria DeLamatre | 573-289-4226 (C) |
| Program Chair | | |
| Day Chapter | Judi Kirkpatrick | 660-734-0358 (C) |
| Program Chair | | |
| Starlight Piecemakers | Dianne Jackson | 660-537-0143 (C) |
| Newsletter | Lora Brinkman | 573-821-0262 (C) |
| Librarian | Sarah Gist | 309-531-2700 (C) |
| Service Project | Barb Sanders | 816-263-1606 (C) |
| Hospitality | Sarah Briggs | 573-222-5753 (C) |
| Quilt Show | Peggy Brothers | 573-442-7352 (H) |
| | Kathryn Reece | 573-619-7928 (H) |
| | Jeanne Sanchez | 660-882-5370 (H) |
| | Susan Shannon | 603-387-4253 (C) |

Board Members/Ad Hoc Committee Chairs

| | | |
|----------------------|---------------------|------------------|
| Webmaster | Janet Hollandsworth | 573-999-5706 (C) |
| Social Media | Barb Nixon | 573-239-1039 (C) |
| Retreat | Ustena Simenson | 573-356-5915 (C) |
| | Janet Sapp | 573-489-9453 (C) |
| Membership Directory | Debbie Odor | 901-218-1345 (C) |

TREASURER'S REPORT

Submitted by
Martha Eberhard
As of November 30, 2019

| | |
|----------------------------------|--------------------|
| Checking Account Balance | \$28,145.75 |
| Savings | \$1,035.25 |
| CD's (2) | \$11,269.54 |
| Total Combined Balance | \$40,450.54 |
| Number of Members | 147 |
| Fiscal Year Beginning Balance | \$17,692.20 |
| FYTD Income | \$17,364.24 |
| FYTD Expenses | (\$6,910.69) |
| Current Checking Account Balance | \$28,145.75 |

Small Wonders

Small Wonders will continue to meet the second Wednesday of each month

Modern Quilt Interest Group

Our first meeting will be January 19th at 2pm. Ustena has graciously offered to allow us to use her salon. We'll see you at 506 Nichols Suite B.



If you shop on Amazon, don't forget to go use smile.amazon.com and set Booneslick Trail Quilters Guild as your charity of choice!

Executive Board Update

At the December 9th meeting, the executive board passed the following motions:

1. To accept the November 18th Secretarial board minutes with name corrections as noted made.
2. To accept the Treasurer's report dated November 1st through November 30th.
3. To purchase new speakers between \$500-\$600 less any trade in from Crazy Music.
4. To adjourn the December 9th meeting at 7:50 P.M.

January

| S | M | T | W | T | F | S |
|--|---|---|--|--|----|----|
| | | | 1 Happy New Year 2020 | 2 | 3 | 4 |
| 5 | 6 Day Chapter 9:00 Sit and Sew 1:00 Program @ Fairview United Methodist Feather-Weight Friends 10:00 Fairview Church | 7 | 8 Small Wonders 1:00 DBRL SASH 6:00 Corinne Remeika's Home | 9 Starlight Chapter 6:00 Doors Open 7:00 Program @ Fairview United Methodist Sassy Stitches Applique 9:30-11:30 DBRL | 10 | 11 |
| 12 | 13 BTQG Board Meeting 6:00 DBRL | 14 | 15 | 16 | 17 | 18 |
| 19 Modern Quilt Interest Group 2PM, at Ustena's Salon, 506 Nichols Suite B | 20 EZ2B Stitches @ Quilt 4U 1:00-3:00 | 21 Bonne Femme Book Group 1:00 @ DBRL | 22 | 23 Redwork 9:00 @ Janice Haralson's | 24 | 25 |
| 26 | 27 | 28 | 29 | 30 | 31 | |

Contacts:

OR check directory for email addresses

Day chapter: Trina Pratt 775-770-4645
Starlight chapter: Robin Heider 573-529-5267
Board of Directors: Alice Leeper 573-489-1458
Newsletter Editor: Lora Brinkman 573-821-0262
Bonne Femme book group:
 Nancy Antonio 573-823-9579
EZ2B Stitches: Merril Winfield 573-446-8676

Featherweight: Pam Close 573-808-3496
Medallion Quilt: Bettina Havig 573-449-1602
Modern Quilt: Lora Brinkman 573-821-0262
SASH: Sarah Briggs 573-634-2162
Sassy Stitches: Peggy Brothers 573-819-6682
Small Wonders: Karon Huggler 573-489-6373
Redwork: Myrna Powers 573-445-0766



CEO MESSAGE



Hi All –

Wishing you each a Happy New Year!

New Speakers for the Guild

Special thanks this month go to Linda Karns and Hank Botts. They were tasked with trying to come up with lighter weight / easier to manage speakers for the guild. Linda and Hank researched multiple options online. They also spoke with D&M Sound who said they don't do this kind of system and suggested trying Crazy Music. Linda spoke with Crazy Music and they recommended a pair of 10-inch speakers that will play nice with our current equipment and fit on the same poles we currently have.

BUT...the good news is that these speakers are 11 pounds lighter (each) than the current speakers! The new speakers weigh 21-pounds apiece which makes them only 2/3's the weight of the current speakers.

Quilt Show

The committee has been reviewing the text of the contract with the Historical Society of Missouri and several learned members of the Guild. The kinks have been worked out and we expect to be signing the contract next week.

With a nod to the upcoming Columbia and Boone County bicentennial celebrations, the theme we've chosen for the 2020 quilt show is:

Block by Block a Quilt is Sewn

Block by Block a Community has Grown

Boone County Bicentennial (2020)

Boone County was organized by an act of the Legislature approved November 16, 1820

Website: <https://bocomo200.com/>

Facebook page: <https://www.facebook.com/bocomo200/>

City of Columbia Bicentennial (2021)

The original settlement of Smithton was abandoned in May 1821 because of poor water supply. Approximately 20 people resettled near what is now the SE corner of Broadway and Fifth Street and called the new settlement Columbia. Columbia was designated the seat of the new County of Boone in the same year.

Website: <https://www.como200.com/>

Facebook page: <https://www.facebook.com/CoMo200/>

Remember the dates of the 2020 Quilt Show are: October 2 – 3, 2020

alice

Winter Retreat Update

Happy Holidays Everyone~

We have a full house for the Winter Retreat! And just a reminder: If Santa or an Elf need to send your remaining balance, please have them mail it to:

Ustena Simenson, 506 Nichols St. Suite B, Columbia, MO 65201

Final payment is due January 7th!!

See you all next year!

New Interest Groups

Our members have started new interest groups and anyone in the guild can join!! Listed below are the new groups forming. Contact them for more details.

- **Featherweight Special Interest Group**—First meeting January 6
Contact Pam Close at closeps@gmail.com or 573-808-3496
- **Medallion Interest Group**—
Contact Bettina Havig at bettinaqc@socket.net or 573-449-1602
- **Modern Quilt Interest Group**—First meeting January 19 at 2PM;
Contact Lora Brinkman at lora3677@gmail.com or 573-821-0262
- **SASH Group**—next meeting January 8 at 6PM
Contact Sarah Briggs at sarahbriggs709@gmail.com or 573-222-5753

Singer Featherweight Interest Group

BTQG Folks interested in sharing about Singer Featherweights (stories, trivia, ephemera, tutorials/information sources, or to learn where to find out how to maintain them for another 60+ years) may wish to join a new BTQG special interest group provisionally termed 'Featherweight Friends'.

We will gather for an Organizational meeting at 10:00 AM, January 6 at Fairview United Methodist Church near the guild library table area of the regular meeting room. Time, date, official group name, and topic agenda of any future meetings will be among the items discussed.

Thanks, Pam

SASH Group Update

The December meeting of SASH was a lot of fun and thankfully no snow! We had a new person join us tonight, Dana Simpson. Several in the group brought their finished December challenge bags while the rest of us brought the fabric we're going to use. What can I say, other than December is a busy month! We decided how many bags we're going to make for the upcoming quilt show store. We'll present the finished bags at an upcoming spring guild meeting. Some members are going to make a "Celebrate Everything" quilt that will have 12 blocks, with each block featuring a special holiday or happening that is important to that individual quilter. How cool is that? Then we played a round of Quilt Trivia and surprisingly we all learned something. Lynn Hill had the highest score and Susan Vaughn and Corinne Remeika tied for second place. Susan won the tiebreaker in an exciting finish. Lynn and Susan won a prize of a bag of Pepperidge Farms stuffing. Great prizes, right? Lol. Our February challenge is "Who Are You?" Our members are going to make a block using fussy cut items, thread art, or applique to tell us what makes them unique. Ah, but a twist! I watch the cooking channel challenges. They have to put something on their block that we'd never guess about them. When the blocks are finished they can be made into a wall hanging to hang by their machines to remind them of just how awesome they are.



If you've not joined us yet, please come! You can do any of the past challenges or just start with the current one at your first meeting. Next month we're going to make yo-yo angles that Lynn Hill brought. Bottom line is we gather to revel in creativity, self expression and the joy of no-stress quilting. Do come and join us!

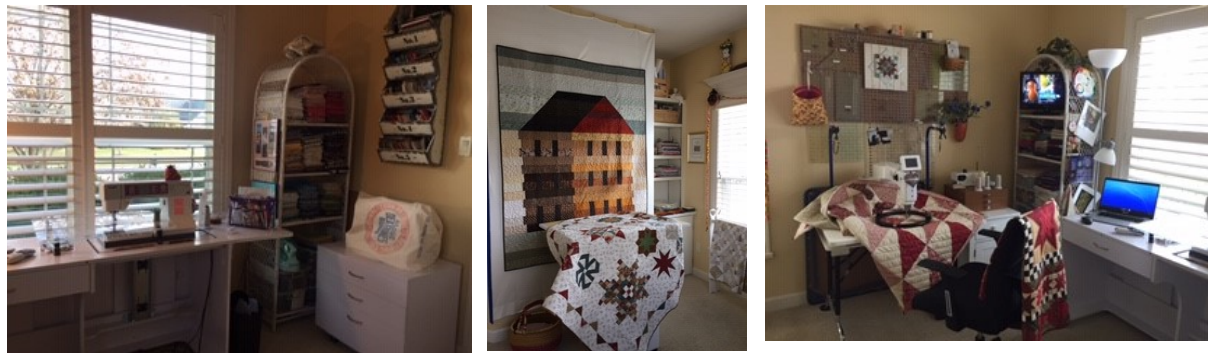
Member Spotlight

This month our very own Daylight Chapter President, Trina Pratt, shares with us how she came to love quilting and how her journey is changing a bit.

| | |
|--|---|
| What attracted you to quilting? | I've always loved quilts and collected them years ago, but didn't start quilting til I was in my late fifties. My husband had retired and had his hobbies, so I needed one, too. |
| When did you start to make quilts? Did you take Classes? Where? | I found a great quilt shop in Reno, Nevada, and quickly made great friends by taking classes there. The shop had a warm, family atmosphere and I blossomed from the guidance of several very talented women. |
| Were you a seamstress before you got interest in quilts? | I had a long history of making clothes, starting in high school and through the early years of motherhood. Small budgets made sewing my daughter's clothes a necessity, and it helped establish a good foundation in machine skills. |
| Did your mother, grandmother, or aunts make quilts? If so, did you learn quilt making from them? | My mother did a lot of handwork, but no quilting. I discovered a few years ago that my paternal grandmother was a well-known quilter in northern Indiana. She was famous for her wedding ring quilts, and I just recently finished one in her honor. It was, however, not done by hand. That's not gonna happen! |
| What is your favorite type of quilt? What part of quilt making do you like most? What do you do with most of the quilts you make? | My favorite type of quilt is the one I'm working on. Since starting my quilt career late in life, I want to explore as many avenues as I can. I'm most attracted to art quilts, love modern quilts, and have a special appreciation for traditional. I love them all! |
| What do you do with most of the quilts you make? | My quilts are stacked all over the house. I need to start farming them out. Since we have a small family, finding recipients for donations is a challenge. |
| Do you prefer to make bed quilts or smaller quilts like wall hangings and decorate items? | Since storage is becoming an issue in my house, I'm leaning more to wall hangings and smaller quilts. |
| Is belonging to BTQG important to you and does it enhance your skills? | Joining BTQG has been a revelation to me. The historical, traditional roots are something to be proud of and it's an honor to be a part of this group. It's easy to become complacent about what you're familiar with. But coming here from a completely different quilt culture out West, I am blown away with the heritage you enjoy in Columbia. I'm sure we'll be growing and introducing new ideas in the years to come, but we must always honor our roots. |
| If you relocated to another town or city would you look for a guild to join? Or would you quit quilting? | I would definitely look for a new guild should we move again (horrors!), but how can you top this one? |

See a few pictures of Trina's space on the next page....

Trina's crafty space (Thanks so much for sharing, Trina!)



Congratulations Willie!

Willie Morris submitted a quilt block representing Boone County's bur oak tree that was accepted by the Missouri Bicentennial Quilt to represent Boone County in the Bicentennial Quilt Project. The project goal is to create a quilt featuring both the diversity of the Show-Me State and its solidarity. In fact – Willie has given us permission to use her block as the basis of the logo for our 2020 Quilt Show.

Missouri 2021 Bicentennial

August 10, 2021 will mark the two hundredth anniversary of Missouri's entry as the 24th state to enter the United States.

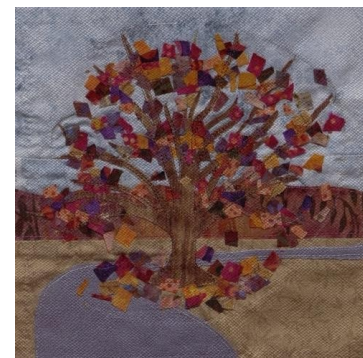
BICENTENNIAL QUILT

The State Historical Society of Missouri and Missouri Star Quilt Company, in partnership with the Missouri State Quilters Guild, are teaming up to create the Missouri Bicentennial Quilt. Using one quilt block from each and every Missouri county and the independent City of St. Louis, the quilt will feature the unique characteristics of Missouri culture and style. Quilt block submissions were accepted from October 8, 2018, through September 2, 2019. Submissions were to be 6.5-inch squares, as blocks will be finished at 6 x 6 inches.

<https://missouri2021.org/bicentennial-quilt/>
 Website: <https://missouri2021.org/>
 Facebook Page: <https://www.facebook.com/Missouri2021/>

Description about the block from the quilt project website:
 Bur Oak – Created by Willene Morris.

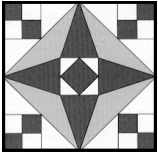
"The bur oak tree located near Eagle Bluffs Conservation Area is one of mid-Missouri's greatest natural landmarks. Estimated to be between 350-400 years old, the bur oak tree has withstood centuries of storms, droughts, floods, and sadly vandalism."



Membership Directory Updates

The following members have renewed or joined since the directory was printed.

| Last Name | First Name | Street | City/State/Zip | E-Mail Address |
|-------------|--------------|----------------------|--------------------|------------------------|
| | | Home Phone | Cell Phone | Birth date |
| Beissenherz | Marilyn | 1423 S Mesa Drive | Columbia, MO 65201 | beissmarilyn@yahoo.com |
| | | (573) 449-6930 | (573) 424-0924 | Nov 11 |
| Hawke | Nancie | 5512 Dalcross Dr | Columbia, MO 65203 | nanciehawke@mac.com |
| | | | (573) 489-4102 | Mar 07 |
| Reel | Elizabeth L. | 4606 Winterbrook Ct. | Columbia, MO 65203 | reel11liz@gmail.com |
| | | | (816) 769-5738 | Apr 23 |



P.O. Box 542
Columbia, MO 65205-0542

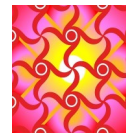


| | |
|-----------------|--------|
| Kathryn Jones | Jan 16 |
| Jackie Pruneau | Jan 17 |
| Twyla Bennett | Jan 17 |
| Hank Botts | Jan 20 |
| Connie Richards | Jan 20 |
| Janet Sapp | Jan 20 |
| Brenda Austin | Jan 21 |
| Peggy Queathem | Jan 31 |



**Starlight Piecemakers
Chapter Meeting**

Thursday, Jan 9, 2020
Doors Open: 6:00pm
Meeting: 7:00pm
Fairview United Methodist
Church



**Day Chapter
Meeting**

Monday, Jan 6, 2020
Sit N Sew: 9:00am
Meeting: 1:00pm
Fairview United Methodist
Church



BTQG is on the Web

[HTTP://BTQG.MISSOURI.ORG](http://BTQG.MISSOURI.ORG)

O u r M e e t i n g P l a c e

**Fairview United Methodist Church
3200 Chapel Hill Road
Columbia, MO 65203**