

# Quilt-A-Gram

Editor: Marilyn Wooldridge

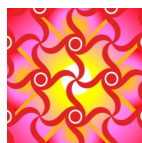
## BOONESLICK TRAIL QUILTERS' GUILD



Starlight Piecemakers  
Chapter Meeting

Thursday, September 1, 2016  
Doors Open at 5:00 pm

Meeting and Program at 7:00 pm



Day Chapter

Monday, September 12, 2016  
9:00 am Sit 'n Sew

1:00 pm Meeting, Program, Show and Tell  
Fairview Methodist Church

Our program will be presented by Lynn Doyle of Bloomin' Minds. You've seen the patterns for wall hangings, sweat shirts and quilts in many quilt shops. She will be doing a trunk show of projects with stories on how they came to be. She shares funny moments of growing up with her family – a little slice of her world. Lynn is a farm kid from northwest Iowa. She describes it as "Leave it to Beaver world – farm-style." Always busy with school, church, 4-H, family activities (and can't forget bean-walking), somehow a love of fabric started to blossom. Years later, she was lucky enough to have worked in mostly fabric and quilt shops. She says, "The best fabric idea I ever had was the day Bloomin' Minds became real. It has been one of the most creative and hardest things I have ever done." Don't miss her colorful trunk show and humorous stories.

Fifteen lucky members will be enjoying her workshop on Friday morning. See the information and registration for in this issue.

Mona Stevenson

We are planning "Round Robin" skills including T-shirt quilts, mitering borders, pillowcase (service), hand turned appliqué and more. When we host a round robin like this we have several stations where members can watch the demonstrations. Each demo will be repeated once so think ahead to which ones you want to hear.

We will have show and tell as usual and also an introduction to interest groups and possible new groups. If you have an interest group that you wish we included please bring your suggestion. We can test the group appeal and start new groups as needed.

Joyce Campbell and I are working to finish out the year of programs on my watch and to plan for a special 2016-17 year of programs. Watch the newsletter for more puzzles and quizzes. Let Joyce know any suggestions. Program chair-person is always a daunting task for a member to take on but suggestions help tailor the job to our member's needs and wants.

Bettina Havig

### Starlight Party Planners

If you enjoy planning festive events, the Starlight Chapter could use your help to plan the Holiday Party in December, the game night with potluck and another event or two. The more the merrier. Chat with me at the next meeting or drop me an e-mail at [Ldstevmo@hotmail.com](mailto:Ldstevmo@hotmail.com).

Mona



# Quilt-A-Gram

Published monthly by Booneslick Trail Quilters' Guild, a not-for-profit organization, established in 1978, and dedicated to educating its members and the community in the art and appreciation of quilt making.

## 2016-2017 BTQG Board of Directors

### Elected Officers:

CEO	Donna Puleo	573-808-6079 cell
Vice CEO	Margaret Muegenburg	573-234-7313 home
President Past CEO	Mindy Smith	573-864-3936 cell
Secretary	Barbara Hawley	573-489-2065 cell
Treasurer	Willie Morris	573-424-1421 cell
Day Chapter President	Ustena Simenson	573-356-5915 cell
Starlight Chapter	Irmgard Marsh	660-591-3223 cell

### Appointed Chairs:

Day Chapter Program Chair	Joyce Campbell	918-521-1534 cell
Starlight Program Chair	Mona Stevenson	573-698-2019 home
Librarian	Louise Bequette	660-651-0114 cell
Historian	Virginia Peterson	573-442-0042 home
Service Project	Christi Brietzke	573-449-3405 home
Newsletter	Marilyn Wooldridge	573-289-2957 cell
Webmaster	Janet Hollandsworth	573-445-1073 home
Membership	Robin Heider	573-446-6254 home
Retreat	Susan Tharp	573-449-2004 home
Quilt Show	Mindy Smith Donna Puleo	573-864-3936 cell 573-808-6079 cell

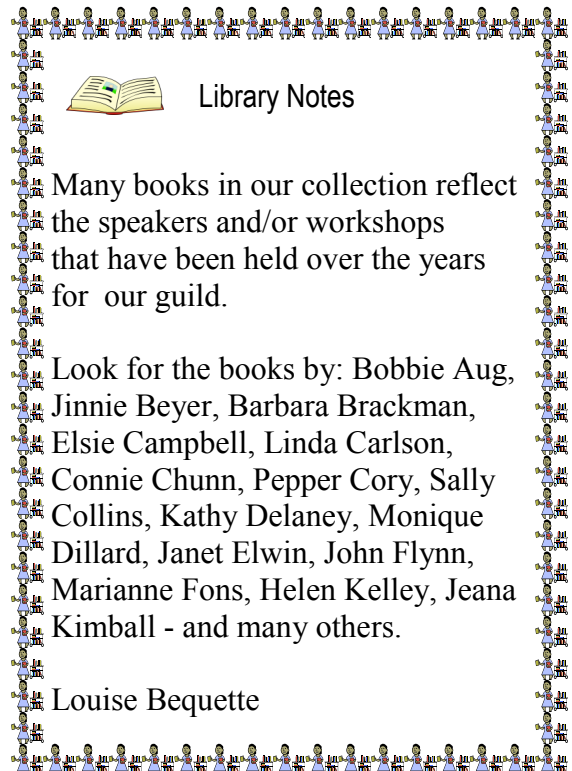


Bonne Femme book group will meet Sept. 20, 1p.m. at DBRL. We decided to reprise **The Forgotten Seamstress** by Liz Trenow. She is an English author who in collaboration with Lynne Edwards, a prominent UK quilting teacher, creates a story that uses a quilt as journal of a woman's life. It's easily available here and we all thought it was worth repeating. The group is hopeful that new readers will want to join us.

## TREASURER'S REPORT

Submitted by  
Willie Morris  
As of July 31, 2016

Checking Acct. Balance	\$ 15,891.84
Savings	\$ 1,034.12
CD's (2)	\$ 10,868.92
<b>Total Combined Balance</b>	<b>\$ 27,794.88</b>
Number of Members	110
Fiscal Year Beginning Balance	\$ 12,407.37
FYTD Income	\$ 4,380.25
FYTD Expenses	(\$933.38)
Current Checking Acct. Bal.	\$ 15,854.24



### Library Notes

Many books in our collection reflect the speakers and/or workshops that have been held over the years for our guild.

Look for the books by: Bobbie Aug, Jinnie Beyer, Barbara Brackman, Elsie Campbell, Linda Carlson, Connie Chunn, Pepper Cory, Sally Collins, Kathy Delaney, Monique Dillard, Janet Elwin, John Flynn, Marianne Fons, Helen Kelley, Jeana Kimball - and many others.

Louise Bequette

Civil War interest group members should bring the block names of patterns they want to share.

# September 2016



SUN	MON	TUE	WED	THU	FRI	SAT
				1 Starlight Piecemakers Chapter Meeting Doors open at 5:00 "Chat and Sew" Meeting at 7:00 pm Fairview United Methodist Church	2	3
4	5 Labor Day	6	7	8 Sassy Stitchers 9:30 am Joann's Store	9	10
11	12 Day Chapter Meeting Sit 'n Sew 9:00 am Meeting at 1:00 pm Fairview United Methodist Church <hr/> BTQG Board Meeting 6:00 pm Fairview United Methodist Church kitchen	13	14 Small Wonders 1:00 pm DBRL	15	16	17
18	19 EZ2B Stitchers 1:00 pm Quilt 4 U	20 Bonne Femme Book Group 1:00 pm DBRL <hr/> Modern Quilts 6:30 pm DBRL	21	22 Redwork 9:00 am Janice Haralson's Home <hr/> Civil War Group 12:30 - 2:00 pm Bettina Havig's Home	23	24
25	26	27 Paper Piecing 1:00 pm	28	29	30	

**Contacts: Day chapter:** Ustena Simenson, 573-356-5915, **Starlight chapter:** Irmgard Marsh, 660-591-3223, **Board of Directors:** Donna Puleo, 573-808-6079, **Newsletter Editor:** Marilyn Wooldridge, 573-289-2957, **Bonne Femme book group:** Bettina Havig, 449-1602, **Small Wonders:** Karon Huggler, 443-7410, **Sassy Stitchers:** Donna Burris, 474-4338, **Basic Quilting:** Corinne Remeika, 449-7574, **EZ2B Stitchers:** Merril Winfield, 446-8676, **Modern Quilt:** Judi Kirkpatrick, 660-734-0358, **English Paper Piecing:** Joan Westcott, 874-8160, **Civil War Group:** Bettina Havig, 449-1602, **Redwork:** Myrna Powers, 445-0766 **OR** check directory for email addresses. \* Indicates a closed group.

## CEO's Message—Donna Puleo



Our Board members just keep getting better and better! It is my great pleasure to announce all of the 2016-17 Board of Directors' positions are filled once Christi Brietzke agreed to be Service Project Chair. Join me in a huge round of applause that goes out to Christi for making the decision to take that leap of faith as we continue our current momentum. She is welcomed with open arms! The women on this year's Board are smart, they are kind and they are important. That's a line from one of my favorite movies that is a way for me to express my gratitude to all of them for their commitment to the Guild. Can you guess which movie I reference? If you can, the first person to approach me on the Saturday of the quilt show wins a free homemade pie.

Let's talk about the quilt show! It's around the corner and the quilt show committee members are devoted to making it one of the best exhibits this side of the Mississippi. Look for more information about the quilt show throughout this newsletter and get your quilts registered with Willie as soon as you can. Another Guild special event is the winter retreat so don't forget to save your pennies and sign up to attend. Plans for that are coming together Sew-Fari, Sew Good and more information about that is throughout this newsletter. Two very special events you don't want to miss!

In August's newsletter I provided inaccurate information about our past newsletter editor. Words matter...and I used an incorrect word in describing Margaret's years of service. A committee chair cannot serve four consecutive years. According to the bylaws, each committee chair shall serve for a term of one year and may succeed for no more than one consecutive term in the same position. I regret making the error in my choice of words but I still commend Margaret for her dedication to the newsletter and to the Guild at large.

As I walked the nature trail this morning, I saw the very early signs of autumn knocking on summer's door. So I hope you all get out and enjoy these warm and humid days before children go back to school and college students flood Columbia. It's all a part of the natural rhythm of life!

September, the harvest month...summer is over and autumn has arrived. – Cynthia Wickham

BTQG 2016 Quilt Show – Quilting Through the Seasons

Well, BTQG, the quilt show is looming on the horizon.....October is at the door. The 2016 quilt show is very exciting and it's going to be another beautiful BTQG display of our quilts, an extraordinary Hands to Heart Market, the 2 peoples' choice quilts from 2014, wonderful vendors, a scissor sharpening service, a very unique miniature quilts and furniture exhibit, Mizzou Botanic Garden exhibit and presentation, and TWO Dawn Heese wool on cotton applique classes.....thank you, Dawn!! The quilt show committee this year is unbelievable! You will find them listed later in this newsletter.....please let them know how much you appreciate their hard work this past year.....I know they repeatedly say in our committee meetings that the BTQG members have done a wonderful job contributing.....so, thank you, BTQG Chicks!

You will find in your newsletter and on the BTQG website, btqg.org, the information for Dawn's classes, a registration form and a supply list. Continue to pick up flyers from Donna Puleo or me and distribute them through the month of September. And.....make WILLIE MORRIS very happy and **get your quilt/s registered asap!!** LINDA KARNIS is working on layout, so the sooner she has your information the easier you make her job.....well.....that job is never "easy," but getting your quilt's information in asap makes a huge difference in allowing more time to map them out on the show floor.....so have mercy on Linda and get your quilts registered! Also.....we need more items in the silent auction, so contact USTENA SIMENSON to make your contributions. If you have donations for Hands to Heart Market, contact Martha or Hank.....they are now accepting magazines, books and patterns.....but we have more than enough fabric on hand, so no fabric donations are needed. AND, Diane Jackson is taking orders for our really wonderful t-shirts for this show (designed by Barb Nixon—thank you Barb!), so contact Diane to order those. AND.....talk about our show on your Facebook page and ask that your friends share the info on their pages as well. We have come dangerously close, but we have never had 1,000 viewers through our show.....so, come on BTQG, let's make that happen in 2016.....Mindy

## Quilt Show Entry Form – Quilting Through The Seasons – Show dates October 1-2, 2016

In order to get the program, map insert, and lay-out done in a timely manner, and accurately, our deadline this year is **September 10<sup>th</sup> (if mailed September 7<sup>th</sup>)**. Less than a month away. SO..... **Start** planning your entries. You must be a paid member to enter a quilt or sponsor a quilt. No quilt may be entered that has been in a BTQG show in the last five years, unless it was voted "Viewer's Choice" in the previous show.

Again this year we **STRONGLY ENCOURAGE** you to type your entry directly into the form on the internet. This will make it much easier to do the labels. It also saves the guild money for printing costs. For those who sincerely shudder and shake at the thought of using the internet, we will be happy to accept the hand-written forms. For anyone who is submitting entries by hand, you will also need to fill in your claim check, except the areas marked "to be assigned". If you do on-line, the computer will fill in the claim check for you. It is quick and easy to do.

TO DO ON-LINE REGISTRATION, you need to know the information from the registration form, especially width and height (IN INCHES).

1. Go to the BTQG website (<http://btqg.missouri.org>) and click on [For Entry Forms Click Here](#).
2. On the next page select [Click here to enter your quilt online](#).
3. Read the directions at the top, BUT basically you just click on each entry with your mouse and type. **Be sure you pull down the arrow that says type of entry** in order to choose Quilt, Friendship, Wall hanging, Decorative, etc. EASY.
4. When finished, hit "Submit Quilt."
5. Double check your typing for accuracy.
6. If okay, hit "submit my entry." If not, go back and make corrections.
7. **Print your claim check and label** (all filled out for you) **before proceeding**.
8. Then either click on "Submit another quilt," or hit the red X in the upper right hand corner to close windows.

Note: If you choose "wearable" OR "decorative," identify the item by "decorative type," so that we can make arrangements to exhibit it properly. Then fill in approximate size. If you made a quilt or other item in a BTQG sponsored class or in a class taught at a retreat, we would like to display those. Your quilt will need to have a sleeve. There are instructions for putting a sleeve on a quilt on the website.

Quilts will need to be checked in at Stoney Creek Inn on Friday, September 30<sup>th</sup> between 8 a.m. and noon.

If you do not want to use the online entry form to enter your quilt, forms will be available at the July and August meetings. The form can also be printed from the BTQG website.

I will be at the July, August and September meetings to answer any questions. If you already know and have finished some of your entries, please submit the forms early.

If you have any questions, you can also call me at 573-424-1421 or email

[morrisw@missouri.edu](mailto:morrisw@missouri.edu) .

Willie Morris



## Hand to Heart Market News

Fellow members of the BTQG.....it is hard to believe that this is the next to last newsletter before the Quilt Show! Time has flown! We feel excited and yet there is much to do yet. If you attended the August guild meetings, you know that we have been gifted with enough fabric that we request no more. It is time to bring books, magazines and patterns for us to sell and all projects as well as challenge pieces need to be brought to the September meetings.

ATTENTION: Workday at Rooster Creek is August 20<sup>th</sup>.  
As of right now here is a list of things you will need to bring:

For the pumpkins: a glue gun if you have one, any fabric you think will make a good pumpkin, although we will have 18-20 pieces cut out, if you have extra stuffing or pieces of left over batting bring those.

For the Wreaths: a sewing machine with a new needle, several colors of thread (red, black, orange, light blue, yellow), a Teflon or similar pressing cloth, and fortitude!

We will send an E-blast regarding carpooling as the time gets closer. It will help if you email or call myself, or Martha Eberhard to let us know you will drive, or would like a ride.

Bring money! Rooster Creek is a quilt shop after all!



### Challenge Reminder

If you have taken the UFO challenge for the quilt show, please finish your project in time to turn in at one of the September meetings. Mona Stevenson will be collecting the entries.

### Quilt Show Props Needed

Sign-up sheets will be available at the September meetings to list decorative items you can supply to enhance the displays at our show. These might include artificial floral/foilage arrangements, small tables or plant stands, children's chairs or rockers, seasonal dolls (such as scarecrows and Santas), easels or other pieces that will be useful for display.

Only non-breakable items, please.

### 2016 Quilt Show Committee:

Mindy Smith-budget/oversight; Donna Puleo-marketing; Lorna Miller-vendors; Martha Eberhard/Hank Botts-Hands to Heart Market; Silent Auction-Ustena Simenson; Raffle Quilt-Sassy Stitches; Volunteers-Hank Botts/Pat Leistner; Quilts Registration-Willie Morris; Layout-Linda Karns; Set Up-Take Down-Ustena Simenson; Signage-Ustena Simenson; Program Booklet-Martha Eberhard; Props-Mona Stevenson; T-Shirts-Diane Jackson/Barb Nixon.

## BOONESLICK TRAIL QUILTER' GUILD

## 2015 - 2016 Quilt Show

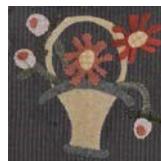
October 1-2, 2016  
Stoney Creek Inn, Columbia MO




---

**Class Supply List For: Dawn Heese**
**Little Woolly Baskets Wool Applique  
Class**


This is a skills class. You will make this beautiful quilt block using wool applique, from Dawn's new Linen Closet Designs quilt pattern just launched this summer, "Little Woolly Baskets." Your class fee of \$35 will also include the pattern for all 12 blocks. The supplies listed below are needed to make the one block. (Class schedule: Saturday, October 1, 9:30 a.m.-12:30 p.m.....or.....Sunday, October 2, 1 p.m.-4 p.m.)



Dawn came from a family of quilters and has been involved in various techniques of needlework all her life. In 2008 she published her first quilt book with Kansas City Star Quilts, Geese in the Rose Garden. She has since published 4 more books and is currently working on her sixth book, scheduled to be released in 2017; and she continues to be featured in several quilting magazines. In the fall of 2010 she started her own design company, Linen Closet Designs, and then expanded to designing her own fabric line with Henry Glass Fabrics. In addition to all that.....she is an absolutely wonderful and delightful teacher. Her website is, [linenclosetdesigns.com](http://linenclosetdesigns.com).

---

**Supplies:**

Background cotton – enough to cut a 6 ½" block.

Wool –

Red - 3" x 6"

Gold – 1 ½" x 3"

Green – 3" x 4"

Pink – 1 ½" x 4"

Gray – 2" x 4 ½"

Buttermilk (soft yellow) – 4" x 6"

Small mat and rotary cutter to cut your block out and stems.

Fray check or fray block

Sharpie

Freezer

Paper Iron

Small, sharp scissors

Applique pins or glue

Size 24 Chenille needle

Embroidery floss in colors to match your wool pieces



## Sew-Fari, Sew Good : The Great Escape

No matter how nice your sewing rooms are, household responsibilities have a way of pulling you away from your sewing. Treat yourself to the pure escape a quilt retreat offers. Imagine days of fun, fabric, and friendship.

**Sew-Fari, Sew Good** is the theme of the 2017 retreat, which is being held March 3 – 5 at the welcoming Lodge of the Four Seasons at the Lake of the Ozarks. (see [www.4seasonsresort.com](http://www.4seasonsresort.com).) Fee is \$190, which includes 2 nights lodging, 6 meals, a large gathering space for sewing, and optional activities such as 2 make and take's and a little bit of exercise in the form of Zumba. This is the most fun you can have in this price range! The registration form is in the July newsletter and also on the website.

What will be your primary reason to attend? Here are some of the reasons your fellow quilt enthusiasts have given for registering:

- To share camaraderie with fellow members.
  - To have a break from cooking and cleaning.
  - To work at own pace.
  - To finish a project.
  - To start a project.
  - To get better acquainted with members.
  - To be inspired.
- The outlet mall is just 8 miles away.

Just once a year, the Booneslick Trail Quilters' Guild offers us a chance to have our own great escape at the retreat. Our committee, Joyce Campbell, Barb Nixon, Irmgard Marsh and ad hoc members Mavis Mitzel and Donna Puleo, is working to make the event truly special. Come join us. You will be so glad you did!

Susan Tharp

I'm so excited for the next 10 months and honored to be your Day Chapter President. It's been quite the journey so far, learning all the intricacies of the guild. It's gonna be a fun ride!

I hope everyone else enjoyed Connie Chunn's presentation as much as I did. I loved seeing all those pictures from years past. And all those lovely pieces she brought to share with us! What a treasure chest of history that was.

Please join me at the September 12th meeting for a Sit & Sew session at 9am. I know I can't be the only lady with UFO's to finish for the Quilt Show! And I might even sweet talk my chef at home into making some treats for sharing.

Hope to see you all next month!



## Quilt Shows and Workshops in the Area

September 8-9-10 - Ozark Piecemakers Quilt Show - Springfield, MO

For more information visit the website - [www.opqshow.com](http://www.opqshow.com)

September 23 - "Classic English Medallion - 21st Century Style" workshop

10:15 am - 4:00 pm - Satin Stitches Quilt Shop

For info, class supply list & to register contact Bettina, [bettinaqc@socket.net](mailto:bettinaqc@socket.net)

September 23-24 - Blue Springs Twilight Stitchers Annual Quilt Show - Blue Springs, MO

Visit: [twilightstitchers.com](http://twilightstitchers.com)

September 24-25 - Country Patchwork Quilt Guild Show - Marshall, MO

For info visit the website - [www.countrypatchworkquilters.com](http://www.countrypatchworkquilters.com)

September through October 11, 2016 - Art Quilts of the Midwest

The National Quilt Museum - Paducah, KY

Learn more about the exhibit - [www.QuiltMusuem.org/Midwest](http://www.QuiltMusuem.org/Midwest)



## A QUIZ FOR QUILTERS #1

**The Quilters Hall of Fame** has recently announced the name of the honoree who will be inducted in 2017.

Remove the necessary part of the page or print from online versions and bring your answers to the September Chapter meetings. We will be draw from the correct answers for a prize at each chapter. Please don't share the correct answers after the first chapter meeting. The correct answers will appear in the October newsletter.

Below is a list of names, some are in The Hall of Fame and some are not. **Circle** the name(s) those who you believe are in the Hall of Fame. Select as many as you think are correct.

Amy Emms

Roberta Horton

Cuesta Benberry

Liz Porter

Barbara Brackman

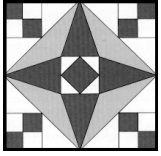
Elly Sienkiewicz

Eleanor Burns

Grace Snyder

Marianne Fons

Marie Webster



P.O. Box 542  
Columbia, MO 65205-542

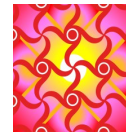


# HAPPY BIRTHDAY!

- Muegenburg, Margaret Sep 04
- Puleo, Donna Sep 04
- Duffy, Julia Sep 11
- Kirkpatrick, Judi Sep 19
- Glenn, Suzanne Sep 20
- Dennis, Brenda Sep 22
- Berry, Jackie Sep 23
- Murphy, Lauri Sep 24
- Baker, Donna Sep 26
- Rohr, Jo Sep 26
- Marsh, Irmgard Sep 29
- Nixon, Barb Sep 29
- Peterson, Virginia Sep 29



**Starlight Piecemakers Chapter Meeting**  
 Thursday, Sept 1, 2016  
 Doors open at 5:00  
 "Chat and Sew"  
 Meeting and Program at 7 pm  
 Fairview United Methodist Church  
 Bring a Quilt for Show and Tell



**Day Chapter Meeting**  
 Monday, Sept 12, 2016  
 9 am—1 pm Sit n' Sew  
 1 pm Business Meeting and Program  
 Fairview United Methodist Church



**BTQG is on the Web**  
[HTTP://BTQG.MISSOURI.ORG](http://BTQG.MISSOURI.ORG)

**Our Meeting Place**  
**Fairview United Methodist Church**  
**3200 Chapel Hill Road**  
**Columbia, MO 65203**



# BOONESLICK TRAIL QUILTER' GUILD

## 2015 - 2016 Quilt Show

### October 1-2, 2016

#### Stoney Creek Inn, Columbia MO

### CLASS REGISTRATION

#### Dawn Heese Class

#### "Little Woolly Baskets"

#### Wool on Cotton Applique



Come spend time in class with author and teacher, Dawn Heese, Linen Closet Designs. You will make a beautiful quilt block using wool applique on cotton, from Dawn's new Linen Closet Designs quilt pattern just launched this summer, "Little Woolly Baskets." The class fee of \$35 will also include the pattern for all 12 blocks.



Dawn came from a family of quilters and has been involved in various techniques of needlework all her life. In 2008 she published her first quilt book with Kansas City Star Quilts, Geese in the Rose Garden. She has since published 4 more books and is currently working on her sixth book, scheduled to be released in 2017; and she continues to be featured in several quilting magazines. In the fall of 2010 she started her own design company, Linen Closet Designs, and then expanded to designing her own fabric line with Henry Glass Fabrics. In addition to all that.....she is an absolutely wonderful and delightful teacher. Her website is, [linenclosetdesigns.com](http://linenclosetdesigns.com).

To register for a class, please complete the information below and mail this form along with a check for \$35, made out to "BTQG" to:

Mindy Smith  
12700 North Route J  
Harrisburg, MO 65256

Please select your preferred class time:

Saturday, October 1 - 9:30 a.m.-12:30 p.m.      -or-       Sunday, October 2 - 1 p.m. - 4 p.m.

Name: \_\_\_\_\_

Address: \_\_\_\_\_

E-mail Address: \_\_\_\_\_

Preferred Phone Number: \_\_\_\_\_

If you have questions, please feel free to call Mindy at 573-864-3936 or email [mindy@missouri.edu](mailto:mindy@missouri.edu)

## Bloomin' Minds Workshop Sept. 2



Size: 10"x20"

**Presented by** Lynn Doyle of Bloomin' Minds, speaker for the Thursday night Starlight program

**Time:** 9 AM to Noon

**Location:** Rockbridge HyVee community room

**Cost:** \$15, which is for the kit. The kit includes fabric for the front and backing, binding, buttons and beads. She will also have embroidery floss available. You will need to provide a light-weight batting, though you may not get that far in the 3 hours of class.

**Details:** The class is limited to **15**, so the first 15 respondents to [Ldstevmo@hotmail.com](mailto:Ldstevmo@hotmail.com) or 573-698-2019 will be in the class. I will maintain a waiting list, so if you must cancel, please let me know as soon as possible so I can notify the first person on the waiting list. She is not charging us to teach the workshop, so the kit fee is her compensation. We'd like to have a full class for her.

The room will be available from 8:30 AM to allow time for set up. Please be ready to begin the class promptly at 9 AM. We must be out of the room by 12:30.

**Supplies needed:** Sewing machine, thread, scissors, cutting board, rotary cutter, ruler, pencil, pins, fusible if you do not wish to use the HeatnBond lite provided by Lynn. If you have a travel iron and mat for fusing, bring those. We will try to have several ironing stations, as well.

### REGISTRATION FORM

Just Bloom Workshop with Lynn Doyle

Friday Sept. 2, 2016

Rockbridge HyVee Community Room

Your Name \_\_\_\_\_

Telephone number \_\_\_\_\_

Email address \_\_\_\_\_

Cost is \$15 for the kit, paid to Lynn the day of the workshop.

To register, mail this form, postmarked after Aug. 20 to

Mona Stevenson,  
162 County Road 439,  
New Franklin MO 65274