



# Booneslick Trail Quilters' Guild

## Quilt-A-Gram

Margaret E. Muegenburg, Editor



### Starlight Piecemakers' Chapter Meeting

Mike and Teresa Cuno of the  
Rooster Creek Quilt Shop

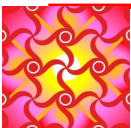


### Starlight Piecemakers' Chapter Meeting

Thursday, July 7, 2016  
Doors open at 6:00 PM  
Program at 7:00 PM

Happy July everyone! It's getting hotter just like it's supposed to be this month so make plans to stay cool! We are looking forward to our new Starlight President, Irmgard Marsh.....Starlight will be hopping next year in her care! Anyway, I'm telling you about the July Starlight program because I helped with plans for the program that night. The program is going to be Mike and Teresa Cuno, owners of Rooster Creek Quilt Store in Holts Summit. A wonderful couple with

a beautiful quilt store. If you haven't visited their shop, you need to do that!...and, if you haven't, you will certainly want to after you meet them. They will also be telling you about the quilt show they are sponsoring July 14, 15, and 16 at Heart of Nashville in New Bloomfield, Missouri. Anyway...I'm so excited for you to meet them and hear about their beautiful business together...see you at July 7 Starlight!  
Mindy



### Day Chapter Meeting Dawn Heese Trunk Show



### Day Chapter Meeting

Monday, July 11, 2016  
Sit and Sew 9:00 am

Meeting and Program at 1:00 PM

The Day Chapter speaker in July is our own Dawn Heese. Here's what Dawn's blog says about Dawn...*I am a quilt and fabric designer in Columbia Mo. My company is called Linen Closet Designs. I create folk art designs with a vintage vibe. I love applique, both in wool and cotton. I am a hand quilter and do both traditional quilting and big stitch. I am the author of 5 books with KC Star Quilts. I have two grown sons, and share my home with 2 dogs and several very spoiled cats (oh, and one man). I do trunk shows and teach workshops nationally.*

It would be easy to say so much more. Dawn is our outgoing and very "outgoing" Starlight Chapter president and has done double duty this year by also planning their programs.  
**Thanks Dawn!!**

Dawn has moved up the teaching ladder and now reaches out to quilters on a national scale. Sometimes it's best to let someone speak for themselves so here's what she has on her website...*she grew up in a family of quilters and stitchers and has been doing some kind of needlework her whole*

*grew up in a family of quilters and stitchers and has been doing some kind of needlework her whole life. I really got into quilting in 1999 and set out to teach myself everything I could about the process. In 2008 I partnered with Kansas City Star Quilts and published my first book, Geese in the Rose Garden. Her fifth book with KC Star was released in Sept. 2014. Book publishing led to magazine work and I started my design company Linen Closet Designs in the fall of 2010. Linen Closet Designs expanded from producing just quilt patterns to include fabric design in partnership with Henry Glass Fabrics. Her first fabric line "Best Wishes" was released in July 2012. I am so blessed to be able to work doing what I love. You can see her work in magazines like Quilt Mania and Primitive Quilt. Dawn will share a trunk show---don't miss it!*

**Please note that the meeting will be held upstairs in the church sanctuary.**





## Quilt-A-Gram

Published monthly by Booneslick Trail Quilters' Guild, a not-for-profit organization, established in 1978, and dedicated to educating its members and the community in the art and appreciation of quilt making.

### 2016-2017 BTQG Board of Directors

#### Elected Officers:

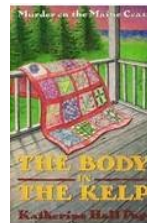
CEO	Donna Puleo	573-808-6079 cell
Vice CEO	Margaret Muegenburg	573-234-7313 home
Secretary	Barbara Hawley	573-489-2065 cell
Treasurer	Willie Morris	573-424-1421 cell
Day Chapter President	Ustena Simenson	573-356-5915 cell
Starlight Chapter President	Irmgard Marsh	660-591-3223 cell
Past CEO	Mindy Smith	573-864-3936 cell

#### Appointed Chairs:

Day Chapter Program Chair	Joyce Campbell	918-521-1534 cell
Starlight Program Chair	Mona Stevenson	573-698-2019 home
Librarian	Louise Bequette	660-651-0114 cell
Historian	Virginia Peterson	573-442-0042 home
Service Project	Vacant	
Newsletter	Vacant/Interim Margaret Muegenburg	573-234-7313 home
Webmaster	Janet Hollandsworth	573-445-1073 home
Membership	Robin Heider	573-446-6254 home
Retreat	Susan Tharp	573-449-2004 home
Quilt Show	Mindy Smith Donna Puleo	573-864-3936 cell 573-808-6079 cell



TREASURER'S REPORT	
Submitted by Carrol Lewis May 31, 2016	
Checking Acct. Balance	\$13,337.03
Money Market Account	1,034.08
CDs (2)	10,867.59
<b>Total Combined Balance</b>	<b>\$25,238.87</b>
Number of Members May 31, 2016	166
Fiscal Year Beginning Balance	\$13,106.23
FYTD Income	19,012.37
FYTD Expenses	<b>18,781.57</b>
Checking Acct Bal As of 5/31/2016	\$13,337.03



### Bonne Femme Book Group

The Bonne Femme book group will meet July 19 at DBRL, 1 p.m.

The July title is THE BODY IN THE KELP by Katherine Hall Page. All guild members are welcome.

#### On a personal note:

I will again be renting classroom space at Satin Stitches quilt shop to teach. I have a workshop scheduled for September 23, 2016. The topic is to be determined. But, if you're interested watch for more information in our BTQG August newsletter. Or contact me directly by email or phone (see our directory).



Bettina Havig

### BTQG June 2016 Board Meeting

No motions were acted upon.



# July 2016

Sunday	Monday	Tuesday	Wednesday	Thursday	Friday	Saturday
					1	2
3	4	5	6	7	8	9
				Starlight Chapter 7:00 PM Meeting Fairview Methodist Church in the Upstairs Sanctuary		
10	11	12	13	14	15	16
	Day Chapter 1:00 PM meeting Fairview Methodist Church - Upstairs Sanctuary *** Board of Directors Meeting 6:00 PM DBRL		Small Wonders 1:00 PM DBRL	Sassy Stitchers 9:30 – 11:30 AM DBRL		
17	18	19	20	21	22	23
	EZ2B Stitchers 1:00 – 3:00 PM Quilt 4 U	Bonne Femme Book Group 1:00 PM DBRL *** Modern Quilt Group – No meeting in July				
24	25	26	27	28	29	30
		Paper Piecing 1:00 PM DBRL		Redwork Call Myrna Powers For location *** Civil War Quilts 12:30 PM at Bettina Havig's home		
31						

**Contacts:** Day chapter, Ustena Simenson, 573-356-5915, Starlight chapter, Irmgard Marsh, 660-591-3223, Board of Directors, Donna Puleo, 573-808-6079/ Newsletter, Interim Editor Margaret Muegenburg, 573-234-7313/ Bonne Femme book group, Bettina Havig, 449-1602/ Small Wonders, Karon Huggler, 443-7410/ Sassy Stitchers, Donna Burris, 474-4338/ Basic Quilting, Corinne Remeika, 449-7574/ EZ2B Stitchers, Merril Winfield, 446-8676/ Modern Quilt, Judi Kirkpatrick, 660-734-0358/ English Paper Piecing, Joan Westcott, 874-8160 / Mystery Quilt, Bettina Havig, 449-1602/Redwork, Myrna Powers, 445-0766 OR check directory for email addresses. \* Indicates a closed group.



## CEO's Message Donna Puleo

What an honor it is to be elected as the Booneslick Trail Quilters' Guild's 2016-17 Chief Executive Officer! I sincerely appreciate your vote of confidence and will admit I have much to learn from all of the Guild members. We are extremely fortunate to have Past CEO Mindy Smith on this year's Board and a great big "THANK YOU" to the new slate of Board members that enthusiastically volunteered to continue the momentum Mindy started. This year's Board is a unique combination of veterans that have served on the Board before or fearless women that just jumped in and offered to give it a try. It is my hope that continues to be the trend for the few leadership positions that have yet to be filled. Please know there are many of your friends and fellow quilters that will be happy to mentor you along the way.

My deepest gratitude also goes out to the 2015-16 Board members for their time, service and outstanding leadership they provided. The Guild will continue to be strong as we build upon their skills and talents as well as the many known and unknown gifts each of you have to offer.

We are in the midst of those lazy, hazy days of summer, so enjoy planned vacations, time with family or a quiet, creative day in the air conditioning! The quilt show is right around the corner and plans for the winter retreat is something to be thinking of and saving for. We also have day and evening programs that will attract everyone's interest. So keep your eyes peeled to the newsletter for more information or check out our Facebook page. You are also welcome and I encourage you to drop me an email at [puleod@missouri.edu](mailto:puleod@missouri.edu) with any questions.

Let me conclude with this thought. In Africa, to go on *safari*—the Swahili word for journey—is to leave the comfort and safety of civilization to venture into the wilderness. My hope is that our journey together will open up discoveries just waiting to be found. Are you ready to go on *safari*?

Lovely July...with the evocative murmur of honey bees on the wing and the smell of sun tan cream.

--Cynthia Wickham



### **BTQG Membership One year membership from July to June**

BTQG membership enrollment is available now for only \$30.00 a year. You are provided with top notch programs on a variety of quilting aspects: the latest innovative methods to make your quilting more productive; workshops to give you an opportunity to learn new quilting skills first hand; Sit and Sew at the Day Chapter morning gathering to share your progress on a quilt or to have a member answer your questions on a technique new for a specific project; and **most importantly to be with women who share the same passion and zeal you do about the entire quilting process.**

**Speak with a member at the sign-in table and they will give you the membership form and answer any questions you may have. This upcoming Year is going to be filled with many new and exciting ideas!**



## Sew-fari, Sew Good

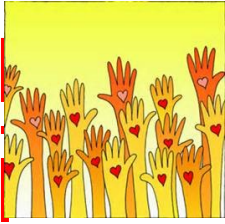
For just a weekend, pause and share your passion with like-minded quilters at the beautiful **Lodge of the Four Seasons** at the Lake of the Ozarks. (See [www.4seasonsresort.com](http://www.4seasonsresort.com)) For just a weekend, leave your obligations behind and come and quilt to your hearts' content. Everything is taken care of, your lodging, your meals, your recreation – a mini-vacation. You are guaranteed to reconnect with guild members and maybe even make a new connection.

**Sew-fari, Sew Good** is the theme of our quilt retreat. *Safari*, is a Swahili word for journey. We invite you to venture into the wilderness of your intuition and discover new quilting ventures. Judi Kirkpatrick will lead a couple of make and takes. You may choose a needle case for your next expedition and/or a Kangaroo pouch to use as a catch all under your sewing machine. Our enthusiastic quilt retreat committee – Joyce Campbell, Barb Nixon, Irmgard Marsh and ad hoc committee members Mavis Mitzel and Donna Puleo have included a weekend of fun diversions. Speaking for myself, the quilt retreat is a great way to build on the creativity of other quilters. Don't miss out - Mark March 3 – March 5, 2017 on your calendar. The registration form is included in this newsletter. There are just 50 spots.

*Susan Tharp, Retreat Chair Person*



## Hand to Heart Quilt Show



Hi fellow BTQG members. Thanks to many of you, we have some beautiful things to sell during the Quilt Show in October. The time is going by quickly and in view of that we have set aside July 30<sup>th</sup> for a 9am to 4pm sewing day. The site is yet to be determined and an email blast will be sent when we know. Also, Martha Eberhard and Hank Botts can be reached by phone or text if you do not get email. We will have things available for people to sew, or if you are working on an item for the Market you can bring it and enjoy the fellowship.

We still have 7 of the challenge kits available and the rules were posted in the last newsletter.

We will collect patterns, books and magazines starting in August.

Myrna Powers is standing by to take your consignment items and the September meetings are the deadline for them

All other projects and your Challenge items need finished and turned in to the Hand to Heart Market by the September meetings.

We plan to have projects to work on during the Sit and Sew times for the August and September meetings and would appreciate your help! Maybe there will be COOKIES!!!

You did such a good job saving animal food bags that we have more than we can use and so do not need more.

For questions or suggestions, contact either Martha Eberhard, 573-356-0311 or "Hank" Botts, 573-424-1190.

## Volunteer

Volunteers Needed!!!

Guild Members.....this is your chance to come to the aid of your Quilt Guild! With the Quilt show coming up so fast we need people to see what they are willing to do during the weekend of the show. In case you have never experienced a Quilt show, stop at the table and see what position you feel you can fill. There will be signup sheets at the July, August and September meetings. **UNCLE SAM NEEDS YOU**.....no, wait, it is your Quilt Guild that needs YOU!!



## Annual Meeting Final Report

BTQG's 2016 annual meeting was held on Saturday, June 4 with 56 members and one guest present. Doors opened at 8:30 AM and a breakfast buffet catered by Peachtree Catering was served at 9:00 AM. CEO Mindy Smith opened the business meeting at 10:00 AM by recognizing the work of the 2015-2016 Board of Directors. This was followed by approval of proposed bylaw changes, approval of the 2016-2017 budget, and election of the 2016-2017 officers. Door prizes for table centerpieces, decommissioned BTQG library books, and donated items from Bettina Havig were sprinkled throughout the business meeting.

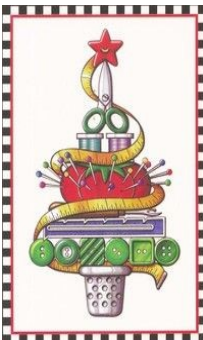
Jonathan Gregory, Assistant Curator of Exhibitions, International Quilt Study Center and Museum, gave a delightful lecture titled "A Disposition to be Inventive: Ernest Haight and What We Know about Men Who Quilt." We learned that while many think that men approach quilt making differently and that their quilts often seem unconventional; in reality, men and women quilters are not all that different.

Special thanks to Hank Botts and Lauri Murphy for serving on the planning committee, Mindy Smith and Judi Kirkpatrick for helping with the room set up, and Joyce Campbell for help at the membership table.

### Income and Expenses for the 2016 Annual Meeting:

Income of 43 meals at \$10 each	\$ (10.00)	43	\$ (430.00)
Speaker Fee	\$ 250.00		
Speaker Travel	\$ 365.87		
Speaker Meal Friday Night	\$ 16.95		
Speaker Lodging	\$ 98.80		\$ 731.62
Peachtree Catering (food, table-ware, linens, gratuity)			\$ 681.00
Centerpieces/Door Prizes			\$ 81.15
Fairview Room Rental			\$ 125.00
<b>Total Cost of Meeting</b>			<b>\$ 1,188.77</b>

Submitted by Martha Eberhard, Chair of Planning Committee



The BTQG Library has a wide selection of quilting books, wall hanging books, holiday gifts and many more to please your appetite because Christmas will be here before we know it. A dear friend, favorite family member or just ideas for your own home can be found in one of the many books the library contains (over a 1,000) has the perfect pattern for you to enjoy making and to know how it will make the Season bright for someone special!!

## Quilt Show Entry Form – Quilting Through The Seasons



In order to get the program, map insert, and lay-out done in a timely manner, and accurately, our deadline this year is **September 10<sup>th</sup> (if mailed September 7th)**. SO..... **Start** planning your entries. You must be a paid member to enter a quilt or sponsor a quilt. No quilt may be entered that has been in a BTQG show in the last five years, unless it was voted “Viewer’s Choice” in the previous show.

Again this year we **STRONGLY ENCOURAGE** you to type your entry directly into the form on the internet. This will make it much easier to do the labels. It also saves the guild money for printing costs. For those who sincerely shudder and shake at the thought of using the internet, we will be happy to accept the hand-written forms. For anyone who is submitting entries by hand, you will also need to fill in your claim check, except the areas marked “to be assigned”. If you do on-line, the computer will fill in the claim check for you. It is quick and easy to do.

TO DO ON-LINE REGISTRATION, you need to know the information from the registration form, especially width and height (IN INCHES).

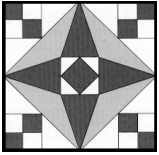
1. Go to the BTQG website (<http://btqg.missouri.org>) and click on [For Entry Forms Click Here](#).
2. On the next page select [Click here to enter your quilt online](#).
3. Read the directions at the top, BUT basically you just click on each entry with your mouse and type. **Be sure you pull down the arrow that says type of entry** in order to choose Quilt, Friendship, Wall hanging, Decorative, etc. EASY.
4. When finished, hit “Submit Quilt.”
5. Double check your typing for accuracy.
6. If okay, hit “submit my entry.” If not, go back and make corrections.
7. **Print your claim check and label** (all filled out for you) **before proceeding**,
8. Then either click on “Submit another quilt,” or hit the red X in the upper right hand corner to close windows.

Note: If you choose “wearable” OR “decorative,” identify the item by “decorative type,” so that we can make arrangements to exhibit it properly. Then fill in approximate size. If you made a quilt or other item in a BTQG sponsored class or in a class taught at a retreat, we would like to display those.

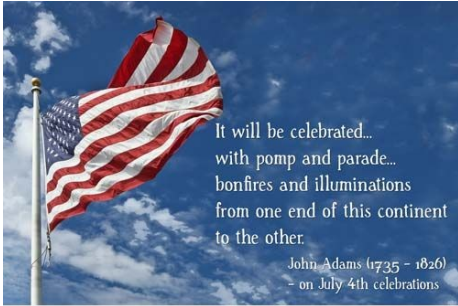
If you do not want to use the online entry form to enter your quilt, forms will be available at the July and August meetings. The form can also be printed from the BTQG website.

I will be at the July, August and September meetings to answer any questions. If you already know and have finished some of your entries, please submit the forms early. IF you have any questions, you can also call me at 573-424-1421 or email [morrisw@missouri.edu](mailto:morrisw@missouri.edu).

Willie Morris



P.O. Box 542  
Columbia, MO 65205-



- |                    |         |
|--------------------|---------|
| Edith Leeper       | July 3  |
| Ustena Simenson    | July 7  |
| Mindy Smith        | July 9  |
| Lauri Rich         | July 9  |
| Rachel Marie White | July 11 |
| Corinne Remeika    | July 11 |
| Ronda Thiessen     | July 21 |
| Nancy Skelly       | July 21 |
| Frances Cope       | July 26 |
| Nancy Graviett     | July 27 |
| Nancy Kennedy      | July 29 |

*Member of Heartland Quilt Network*



**Starlight Piecemaker's  
Chapter Meeting**  
Thursday, July 7, 2016  
Doors open at 6:00 PM  
Program begins at 7:00 PM



**Day Chapter Meeting**  
Monday July 11, 2016 Meeting  
and Program at 1:00 PM  
Meeting in the Sanctuary



**Don't forget show and tell!**



**BTQG is on the Web**  
[HTTP://BTQG.MISSOURI.ORG](http://BTQG.MISSOURI.ORG)

**Our Meeting Place**  
Fairview United Methodist Church  
3200 Chapel Hill Road  
Columbia, MO 65203





## Secret Sister Information Sheet Sew-fari, Sew Good Retreat

The secret sister activity is optional, but a lot of fun. The idea is to pass anonymous little gifts to your secret sister throughout the weekend and 1 big gift that will be given out on Sunday at lunch. The idea is not to

spend a lot

of money. Bring your big gift wrapped, with your name on the inside and your Secret Sister's name on the outside.

Please complete the following questionnaire; this information will be passed along to the participant who will have you as their secret sister. With your retreat packet, you will receive your secret sister's information.

Name: \_\_\_\_\_

Number of years you've been quilting? \_\_\_\_\_

Do you prefer hand piecing or machine piecing? \_\_\_\_\_

Favorite color(s): \_\_\_\_\_

Least favorite color(s): \_\_\_\_\_

Favorite Holiday(s): \_\_\_\_\_

Fabric types you enjoy or collect (solids, batiks, brights, etc.): \_\_\_\_\_

Any special quilting techniques you want to try? \_\_\_\_\_

Favorite Quilt Designer \_\_\_\_\_

Most recent book read \_\_\_\_\_

Other hobbies: \_\_\_\_\_

Favorite snacks: \_\_\_\_\_

Food Allergies or special diet considerations: \_\_\_\_\_

Other guild members who know you and could help if needed: \_\_\_\_\_

Other helpful information: \_\_\_\_\_

If you have questions regarding the secret sister activity, please contact Barb Nixon.

Registration Form



Sew-Fari, Sew Good  
31<sup>st</sup> Annual Booneslick Trail Quilters' Retreat  
March 3 - 5, 2017

Name \_\_\_\_\_  
Address \_\_\_\_\_  
City \_\_\_\_\_ State \_\_\_\_\_ Zip \_\_\_\_\_  
Home phone \_\_\_\_\_ Cell phone \_\_\_\_\_  
Email \_\_\_\_\_

I wish to participate in "Secret Sister" YES NO

I wish to participate in "Make and Take" (supplies provided, choose one or both)  
Needle case YES NO Under Sewing Machine Pouch YES NO

Roommate request \_\_\_\_\_

Is ADA-accessible room required? \_\_\_\_\_

Dietary restrictions \_\_\_\_\_

Emergency contact: \_\_\_\_\_ Phone \_\_\_\_\_

**Retreat fee \$190** Amount Paid \_\_\_\_\_ Check # \_\_\_\_\_

Mail registration form and check with full or half payment made out to **BTQG** to:  
Susan Tharp  
4520 E. Bridgewood Drive  
Columbia, Mo. 65203

*Please note: Final payment due December 30, 2016. You will receive an email confirming your space.*



# BOONESLICK TRAIL QUILTERS' GUILD

## 2016-17 MEMBERSHIP FORM

BTQG is only as strong as the commitment of its members.  
Please indicate below in which area/s you will plan to volunteer time.

Renewal: \_\_\_\_\_ New Member \_\_\_\_\_ I am willing to chair a committee: \_\_\_\_\_

I am willing to serve on the following committee/s:

Service Projects \_\_\_\_\_ Historian \_\_\_\_\_ Day Chapter Programming \_\_\_\_\_

Membership \_\_\_\_\_ Library \_\_\_\_\_ Starlight Chapter Programming \_\_\_\_\_

Newsletter \_\_\_\_\_ Retreat \_\_\_\_\_ Quilt Show Committee \_\_\_\_\_

Name: \_\_\_\_\_

Street: \_\_\_\_\_

City/Zip: \_\_\_\_\_

Home Phone: \_\_\_\_\_ Cell Phone: \_\_\_\_\_

Work Phone: \_\_\_\_\_ Birthday: \_\_\_\_\_

Website: \_\_\_\_\_

Email Address: \_\_\_\_\_

I am willing to chair a committee: \_\_\_\_\_

I am willing to serve on the following committee/s:

Service Projects \_\_\_\_\_ Historian \_\_\_\_\_ Day Chapter Programming \_\_\_\_\_

Membership \_\_\_\_\_ Library \_\_\_\_\_ Starlight Chapter Programming \_\_\_\_\_

Newsletter \_\_\_\_\_ Retreat \_\_\_\_\_ Quilt Show Committee \_\_\_\_\_

I am willing to make a program presentation/host a truck show: \_\_\_\_\_

I am willing to teach a class about: \_\_\_\_\_

My suggestions for topics or speakers: \_\_\_\_\_

\_\_\_\_\_