

# Quilt-A-Gram



Margaret E. Muegenburg, Editor:

## BOONESLICK TRAIL QUILTERS' GUILD



### Starlight Piecemakers' Chapter Meeting

**Thursday, October 2, 2014**

**Doors Open at 6 pm**

**Meeting and Program begin at 7:00 PM**

**Fairview Methodist Church**

**Mary Barile**

**Ghost Stories of Missouri**

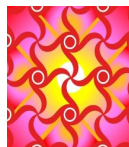
Autumn, who doesn't like the cool brisk days, apples, pecans, football, sweaters, candy corn, bright warm colors against a blue sky and all the other things associated with, what I think, is the most inspiring and beautiful time of the year. Also inspiring will be, Mary Barile as our guest and speaker for the October meeting. She will be relating ghost stories of the Missouri Heartland and also bringing various projects she has done with wool and hooked rugs.



Thank you to all that volunteered to bring fall "treats" for our reception for her, and if anyone else would like to volunteer to bring something, please send Mindy an e-mail to let her know. [mindy@missouri.edu](mailto:mindy@missouri.edu) Wear a costume if you wish, bring your fall quilts & projects and let's have an entertaining evening with Mary. November will be a wrap with the Quilt Show and we will be sending information about the catered holiday party at a later date.

Tip from the American Patchwork & Quilting Magazine from the April, 2009 issue: *"When machine-quilting miniature projects, use a shorter-than-normal stitch length. The stitches will be better proportioned to the quilt's small size."* ~ Ann Hermes

Sally Russell  
Starlight Chapter President



### Day Chapter

**Monday, October 6, 2014**

**9:00 am Sit 'n Sew**

**12 noon Brown bag lunch**

**Bring food to share**

**1:00 pm Meeting, Program, Show and Tell**

**Fairview Methodist Church**

**Trish Price**

**Making the Most of Negative Space  
in Modern Quilts**

Hello Quilters,

Jackie Berry's trunk show last month was wonderful! Thank you to all the people who covered the windows with drapes for the slide show, and a big thank you to Jackie's Traveling Road Show for all the high-tech equipment they brought and set-up—that was fun to watch and it made my job a little easier that day!



This month, we will have guest speaker, Trish Price on the subject of Making the Most of Negative Space in Modern Quilts. It should be very interesting and the members interested in modern quilting will love it.

Hope to see all of you there.

Kaye Mallory  
Day Chapter President

Please  
Do Not  
Park  
On Grass

The Fairview United Methodist Church has requested that our members not park on the grass for either meeting. If you find the lower parking lot full when you arrive you have two options: Park in the top lot and come down the elevator or park on the side of the paved drive way. If you can, you may wish to schedule your arrival time earlier.



## Quilt-A-Gram



Published monthly by Booneslick Trail Quilters' Guild, a not-for-profit organization, established in 1978, and dedicated to educating its members and the community in the art and appreciation of quilt making.

### 2014-2015 BTQG Board of Directors

<b>Elected Officers:</b>		
CEO	Martha Eberhard	573-356-0311
Vice CEO	Bettina Havig	573-449-1602
Secretary	Nancy Antonio	573-823-9579
Treasurer	Maria DeLamatre	573-289-4226
Past CEO	Sharon Lawler	573-696-0102
Day Chapter President	Kaye Mallory	660-349-5128
Starlight Chapter President	Sally Russell	573-443-5479
<b>Appointed Chairs:</b>		
Day Chapter Program Chair	Louise Bequette	660-263-9221
Starlight Program Chair	Mindy Smith	573-874-1308
Librarian	Robin Heider Hank Botts	573-446-6254 573-424-1190
Historian	Virginia Peterson	573-442-0042
Service Project	Lauri Rich	573-808-1571
Newsletter	Margaret Muegenburg	573-234-7313
Membership Roster	Dianne Jackson	660-882-2549
Webmaster	Willie Morris	573-445-4217
Membership	Joyce Campbell	918-521-1534
Hospitality		
Retreat	Anna Mary Hughes Catherine Duffy Sandy Womack Julia Duffy	660-288-3225 361-834-3418 573-808-5007 361-739-8789
Quilt Show	Donna Puleo Mary Pilkenton	573-446-1077 573-442-2416

### TREASURER'S REPORT

Submitted by  
Maria DeLamatre  
As of  
August 31, 2014

Checking Acct. Balance	\$12,107.94
Savings	1,033.83
CDs (2)	10,848.34
Total Combine Balance	\$23,990.11
Number of Members 8/31/2014	131
Fiscal Year Beginning Balance	\$ 8,955.19
FYTD Income	4,021.00
FYTD Expenses	868.25
Current Checking Acct. Bal.	\$12,107.94

### Motions from September 8, 2014 Board Meeting

BTQG will participate in the KMOS Create Expo. Motion passed.

BTQG will change venues for the quilt show from Missouri United Methodist Church to Fairview United Methodist Church. Motion passed.

Children, 8 and under, when accompanied by a paying adult attending the quilt show will have free admission. Motion passed.

In BTQG policies, the sentence in the Service Project section, "All recipients of quilts must be a 501c3" be stricken out. Motion passed.

In BTQG policies, section Service Project, add "The Chairperson shall determine the distribution based on need." Motion passed.

In BTQG policies, add section 13 regarding Board voting: Board Votes

Every board member is entitled to one vote on any motion made at a regular or special board meeting.

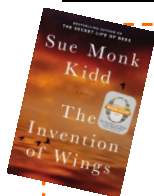
There shall be no absentee votes at a regular or special board meeting; only those present may vote.

An electronic vote may be taken when at least two elected officers deem an issue time sensitive; each board member may cast one vote within a specified time limit. Voting board members must respond 'to all' when voting electronically for the vote to count.

Board members may post comments before voting and within the time limits of the vote.

N.B. Roberts Rule clearly states that the presiding officer may only vote when their vote will effect the outcome. That means that for our board the CEO may only vote in case of a tie.

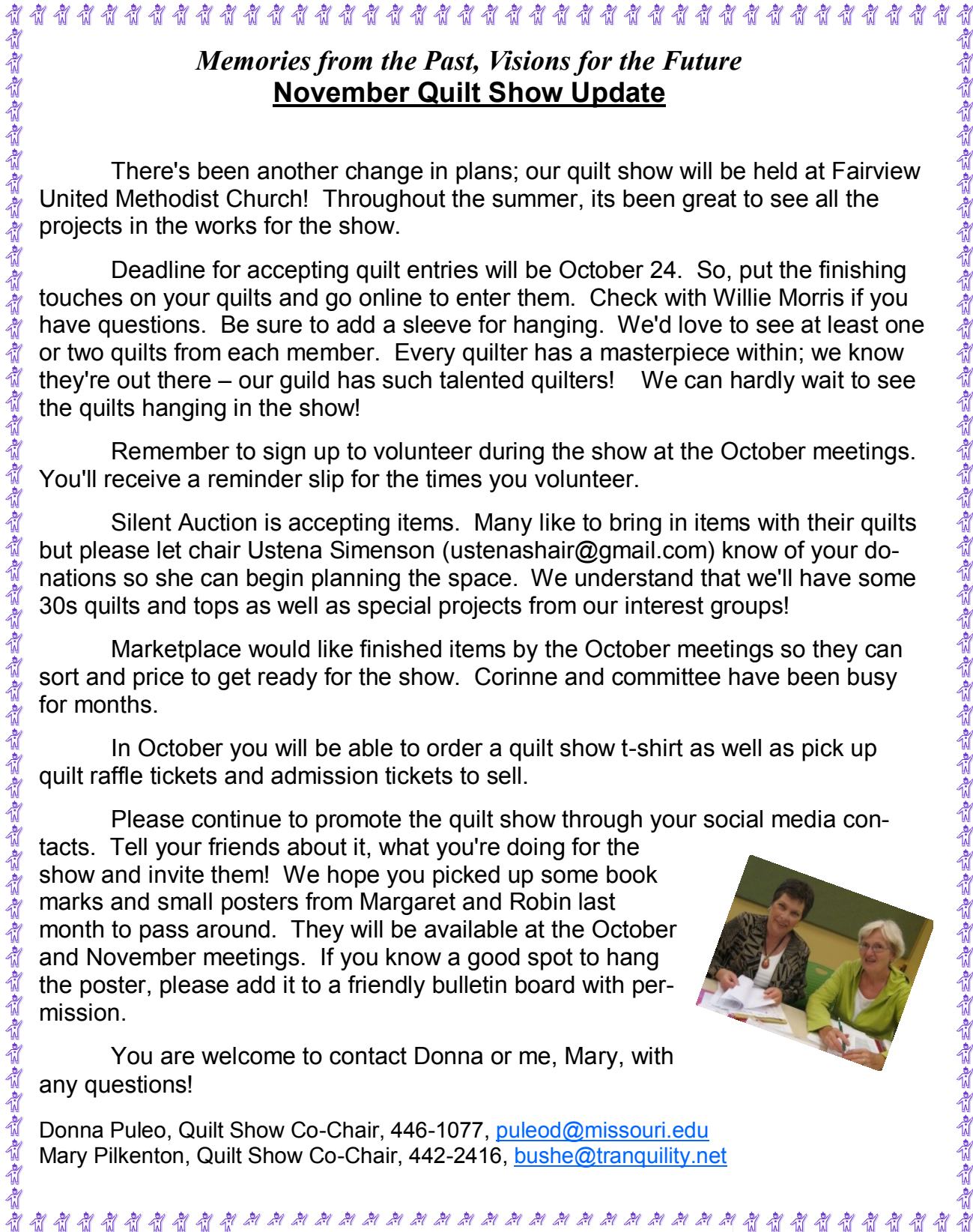
Motion passed with one dissenting vote by Sharon Lawler. A motion to table the motion on Board voting failed.



**Bonne Femme Book** group will meet on Tuesday, October 21 at the Library from 1:00 pm to 3:00 pm. The October selection is *THE INVENTION OF WINGS* by Sue Monk Kidd. In November the group will discuss *A SINGLE THREAD* by Marie Bostwick. We would enjoy have your recommendations for upcoming gatherings with you joining us. All guild members are welcome. Please contact Bettina Havig regarding the group at 573-819-1774 or [bettinaqc@socket.net](mailto:bettinaqc@socket.net).

Newsletter deadline is the Wednesday after the Executive Board Meeting at 6:30 pm, of each month.

E-mail items to: [maggiemueg@aol.com](mailto:maggiemueg@aol.com). [BTQGfeb1978@yahoo.com](mailto:BTQGfeb1978@yahoo.com)



## ***Memories from the Past, Visions for the Future*** **November Quilt Show Update**

There's been another change in plans; our quilt show will be held at Fairview United Methodist Church! Throughout the summer, its been great to see all the projects in the works for the show.

Deadline for accepting quilt entries will be October 24. So, put the finishing touches on your quilts and go online to enter them. Check with Willie Morris if you have questions. Be sure to add a sleeve for hanging. We'd love to see at least one or two quilts from each member. Every quilter has a masterpiece within; we know they're out there – our guild has such talented quilters! We can hardly wait to see the quilts hanging in the show!

Remember to sign up to volunteer during the show at the October meetings. You'll receive a reminder slip for the times you volunteer.

Silent Auction is accepting items. Many like to bring in items with their quilts but please let chair Ustena Simenson (ustenashair@gmail.com) know of your donations so she can begin planning the space. We understand that we'll have some 30s quilts and tops as well as special projects from our interest groups!

Marketplace would like finished items by the October meetings so they can sort and price to get ready for the show. Corinne and committee have been busy for months.

In October you will be able to order a quilt show t-shirt as well as pick up quilt raffle tickets and admission tickets to sell.

Please continue to promote the quilt show through your social media contacts. Tell your friends about it, what you're doing for the show and invite them! We hope you picked up some book marks and small posters from Margaret and Robin last month to pass around. They will be available at the October and November meetings. If you know a good spot to hang the poster, please add it to a friendly bulletin board with permission.



You are welcome to contact Donna or me, Mary, with any questions!

Donna Puleo, Quilt Show Co-Chair, 446-1077, [puleod@missouri.edu](mailto:puleod@missouri.edu)  
Mary Pilkenton, Quilt Show Co-Chair, 442-2416, [bush@tranquility.net](mailto:bush@tranquility.net)

### **THE ULTIMATE HALLOWEEN CANDY BAR!**



dollhousebakeshoppe.com



# October 2014

**Guild related or sponsored activities are included in the Master Calendar.**

Interest groups that are currently closed are noted with ‡‡. For additional information call the contact person listed. New interest groups may be formed at any time.

Please contact Vice CEO, Bettina Havig, 449-1602, [bettinaqc@socket.net](mailto:bettinaqc@socket.net)

## **BOARD AND CHAPTER EVENTS**

Date	Time	Event	Place & Contact
6 Oct	9:00 AM	Day Chapter "Sit and Sew"	Fairview United Methodist Church Kaye Mallory 660-349-5128
6 Oct	1:00 PM	<b>Day Chapter Meeting</b>	Fairview United Methodist Church Kaye Mallory 660-349-5128
2 Oct	7:00 PM	<b>Starlight Piecemakers</b> Doors open 6:00 to sew, visit, eat	Fairview United Methodist Church Sally Russell 573-443-5479
13 Oct	6:30 PM	Board of Directors Meeting	RE/MAX Martha Eberhard 573-356-0311
15 Oct	5:00 PM	<b>Newsletter Deadline</b>	Margaret Muegenburg 573-234-7313 <a href="mailto:maggiemueg@aol.com">maggiemueg@aol.com</a>

## **SPECIAL INTEREST GROUPS**

21 Oct	1-3 PM	Bonne Femme Book group	DBRL Bettina Havig 573-449-1602
8 Oct	10:00 AM	Small Wonders--New Group	at Oasis Karon Huggler 443-7410
9 Oct	9:30-11:30AM	Sassy Stitchers (Day Appliqué)	Quilt 4U Donna Burris 474-4338
15 Oct	9:00 a.m.-noon	Basic Quilting	For location call Corinne Remeika, 449-7574
20 Oct	1:00 PM	EZ2B Stitchers (Handmade Quilts)	at Quilt 4 U Linda Sandlin 814-1629
16 Oct	9:00 AM	English Paper Piecing	For location contact Joan Westcott 874-8160
monthly	By email	Mystery Quilt #5 begins Aug.	Cecile Mazan <a href="mailto:cemazan@gmail.com">cemazan@gmail.com</a>

## **‡‡CLOSED SPECIAL INTEREST GROUPS**

27 Oct	2:00 PM	‡‡Innovators	DBRL conference room B Joan Westcott 874-8160
23 Oct	9:00 AM	‡‡Red Work	Myrna Powers 573-445-0766
28 Oct	1:00 PM	‡‡ Charm Group	Lauri Murphy 446-2476



## Notes from the CEO



After careful deliberation, the board gave the Quilt Show Committee approval to change the quilt show venue from Missouri United Methodist Church to Fairview United Methodist Church. Missouri United is a beautiful church and they were receptive to many of our requests; however, they were not able to meet a critical need which was access to the facility on Thursday before the show. It was with great fortune that Fairview United was available and at a comparable cost. We have entered into a contract with Fairview and sent our regrets to Missouri United, who was very gracious in all of our communications. The timing was good as we had not signed a contract or put any money down at Missouri United.

Part of the reason we were able to move so quickly on this issue is because, in lieu of calling a special meeting, the board participated in their first electronic voting. A motion was made and emailed to the board who had one week to comment, share discussion, and place their vote. I'm thrilled to say that we exceeded quorum with 81% participation. At the September meeting, the board approved a motion outlining voting procedures, including electronic voting which will be reserved for time sensitive issues that must be resolved before the next scheduled Board Meeting.

Martha Eberhard, BTQG CEO  
marthaeberhard@hotmail.com

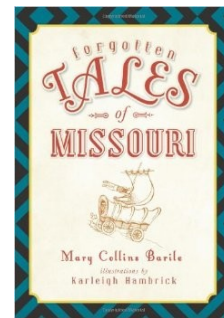


Booneslick Trail Quilters Guild will participate in the KMOS Create Expo Saturday November 8 at Parkside Plaza. We will

have a quilt on display and be demonstrating the skills of quilt making. Our goal is to promote the guild and its advantages and perhaps add new members to our ranks. The Expo is from 10 a.m. until 5 p.m. Please plan to stop by and see us and the rest of the Create Expo displays. Many of them will be demonstrating skills and/or selling products.

This will be a golden opportunity to promote the quilt show. Let's all pitch in to make the quilt show one that will astound the people we meet on November 8.

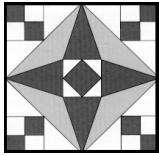
Bettina Havig, Vice-CEO



The Starlight Chapter for October will feature author Mary Barile as she shares her knowledge of Missouri and its many hidden treasures. Perfect for Halloween!



Modern quilts will be the focus of the Day Chapter October meeting. Here are two example of modern quilts.



P.O. Box 542  
Columbia, MO 65205-542



*A falling leaf is nor more than  
a summer's wave good bye.*

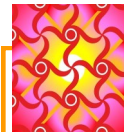
**O  
c  
t  
o  
b  
e  
r  
  
B  
i  
r  
t  
h  
d  
a  
y**

- |                 |        |
|-----------------|--------|
| Robin Heider    | Oct 7  |
| Ann Rennie      | Oct 8  |
| Mona Stevenson  | Oct 9  |
| Pat Leistner    | Oct 13 |
| Myrna Powers    | Oct 17 |
| Laura Eggeman   | Oct 18 |
| Glenna Lawson   | Oct 19 |
| Mary Peterson   | Oct 19 |
| Janice Haralson | Oct 22 |
| Ruth Davis      | Oct 26 |
| Mary Pilkenton  | Oct 27 |
| Sally Russell   | Oct 27 |
| Bettina Havig   | Oct 29 |
| Joan Pottinger  | Oct 30 |
| Marty Webster   | Oct 30 |



**Starlight Piecemakers'  
Chapter Meeting**

Thursday, October 2, 2014  
Doors open at 6 pm  
Fairview United Methodist Church  
Bring a Quilt for Show and Tell



**Day Chapter  
Monday, October 6, 2014**

9—1 Sit and Sew  
12 noon Lunch  
1—Business Meeting and Program  
Fairview United Methodist Church  
Bring a Quilt for Show and Tell



**BTQG is on the Web**

**[HTTP://BTQG.MISSOURI.ORG](http://BTQG.MISSOURI.ORG)**

**Our Meeting Place**

**Fairview United Methodist Church  
3200 Chapel Hill Road  
Columbia, MO 65203**



**Monkeying Around**  
**29th Annual BTQG Retreat**  
**March 6-8, 2015**  
**Country Club Hotel & Spa, Lake Ozark, MO**

It's that time again, when BTQG quilters look forward to gathering at our retreat to enjoy sewing, talking, eating, and even occasionally sleeping with dreams of quilting in our heads. This year we will be going back to the same location as last year, the Country Club Hotel & Spa at Lake Ozark, MO, and the layout is large enough that we have opened up our capacity to 60 quilters.

We have lined up teachers for 3 classes---Bettina Havig will teach a technique and skills class in hand quilting, Anna Mary Hughes will offer you the chance to create fabric storage boxes for your quilting magazines and books, and Catherine Duffy will guide you through making a small pillow or wall hanging with a basket and flowers pattern in wool.

The form must be postmarked **on or after September 1, 2014**. More information about the class projects will be at the October chapter meetings.

Meanwhile the retreat committee is busy 'monkeying around' to create a fun weekend for everyone. Hope you will join us.

Anna Mary Hughes, Catherine Duffy, Julia Duffy, Sandy Womack

Monkeying Around  
March 6, 7, 8, 2015  
**Registration Form**

Name \_\_\_\_\_

Address \_\_\_\_\_

City \_\_\_\_\_ State \_\_\_\_\_ Zip \_\_\_\_\_

Daytime Phone \_\_\_\_\_ Evening Phone \_\_\_\_\_

E-Mail Address \_\_\_\_\_

I wish to participate in 'Secret Sister': Yes \_\_\_\_\_ No \_\_\_\_\_  
(Form available from Sandy Womack or at the next months' meetings.)

Please check the classes you wish to take:

\_\_\_\_\_ "Hand Quilting Skills" - Bettina Havig. Designed to sharpen your quilting skills and Develop good techniques. Sat. 9-12. Pattern provided. Max class size 15.

\_\_\_\_\_ "Fused & Folded Boxes" - Anna Mary Hughes. Cute fabric boxes for magazines or books. Sat. 2-5. \$8 pattern purchase in class. Max class size 12.

\_\_\_\_\_ "Basket of Flowers in Wool" - Catherine Duffy. Small pillow or wall hanging. Fri. eve 7-9. Max class size 12.

Roommate request(s): \_\_\_\_\_

Dietary restrictions: \_\_\_\_\_  
(i.e. vegetarian only, gluten-free, etc.)

ADA-accessible room required? \_\_\_\_\_

Emergency contact name: \_\_\_\_\_ Phone \_\_\_\_\_

**Retreat fee: \$170.00** Amount Paid \_\_\_\_\_ Check # \_\_\_\_\_

Mail this registration form with full or 1/2 (\$85.00) payment on or after September 1, 2014.  
Remainder due by January 2, 2015

Mail to: Sandy Womack  
4809 Chilton Court  
Columbia, MO 65203