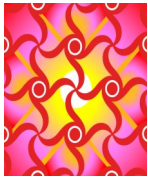


# Quilt-A-Gram

Editor: Margaret E. Muegenburg

## B O O N E S L I C K T R A I L Q U I L T E R S ' G U I L D



**Day Chapter**  
**Monday, July 2, 2012**  
 9 AM- 12 Noon: Sit and Sew  
 10 AM—11:30 PM Skills Interest Group  
 with Bettina Havig  
 12 noon: Brown Bag Lunch/  
 Bring items to share  
 1 PM: Business Meeting and Program  
 Fairview Methodist Church

### Lincoln's State Historic Site in 1830 Shirley Locksus

A log cabin was the first quilt Shirley Locksus made in 1981. Her trunk show will give us a bird's eye view through the eyes of a volunteer dressed in 1830's clothing as she describes a visit to Lincoln's State Historic site at Petersburg, Illinois.

This historical trunk show will wet your quilting appetite to plan your next quilt project with fabrics from our past. Shirley does take time for gardening, visiting with her family or shopping for fabric when she isn't in her sewing room creating quilts from her favorite Civil War fabrics. This might also be a wonderful patriotic start for the 4th of July celebrations. Hope to see you there!



Lauri Murphy

Thank you all for electing me president of Day Chapter. It is an honor to be your president. I appreciate the kind words and support you've given me. I hope you'll still be happy with me at the end of the guild year!

Please let me know if you have any suggestions or ideas for Day Chapter. If you have complaints or criticisms be sure to direct them to Mary Petersen who so cheerfully nominated me!

Corinne and her board did such a great job last year. They gave us an interesting and successful year. They're a hard act to follow! Thanks, ladies!

Lauri Murphy has arranged a **unique** trunk show for our **July 2** meeting. Bring your 1800's quilts (reproduction or antique) and patriotic items for show and tell. They will complement our program.

Did you all have as much fun at the quilt show as I did? It was a great show. Congratulations, Tammy and Alice! I was so encouraged to see the smiles on faces of members who were working long, long hours at the show. Our guests had smiles, too! I heard many appreciative comments from the SUGAR participants.

See you all July 2.....  
 Carol Jean



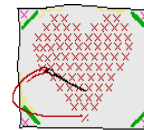
**Starlight Piecemakers'**  
**Thursday, July 5, 2012**  
**7 PM Meeting and Speaker**  
**Bring a quilt to share for**  
**Show and Tell**  
**Fairview Methodist Church**

### Quilting: A Journey with Life Ann Hazelwood

Patches, etc in St. Charles was the inspiration of Ann Hazelwood for over 30 years. You may have visited her shop often unaware of her rich background in the quilting field. Patches evolved to include the Patches Craft Center and Patches Button Shoppe. Ann is a collector of all things red and white which includes a quilt exhibit at the National Quilt Museum called *The Story of Red and White?*

Ann sold Patches, etc. in 2008 so she could move on to writing and traveling. She has written books with such titles as: *Thoughts and Dreams for Quilters*, *Tips from Award Winning Quilters*, *The Red Thread*, and *Sweet Treats for Quilters*. Added to her list of published books include *Best Kept Secrets of Missouri*, *Unique Eats and Eateries in Missouri* and *Festive Finds of Missouri*.

Red and white her collection antique quilts, feed sacks, Doll quilts and



colors flourish with of red and white aprons, handkerchiefs, buttons and redwork. wall splashers are added to the mix of collectibles.

You may have seen Ann on the Antiques Roadshow when it originates from St. Louis. She has served as a Certified Quilt Appraiser and an Official Textile Appraiser with the show and with AQS. Ann has written many articles for various quilting publications. In conjunction with AQS, she will have a series of quilt fiction books available later this year.

Ann is married to Keith Hazelwood, Attorney at Law, and has two sons and two step-sons with whom she spends time when not quilting or writing.

It is an honor to have Ann share her vast expertise in quilting with the Starlight Meeting.



## Quilt-A-Gram

Published monthly by Booneslick Trail Quilters' Guild, a not-for-profit organization, established in 1978, and dedicated to educating its members and the community in the art and appreciation of quilt making.

### 2012-2013 BTQG Executive Board

CEO Chairman:	Dennis Smith	573-445-7787
Vice-Chairman:	Sharon Lawyer	573-696-0102
Secretary:	Robin Heider	573-446-6254
Treasurer:	Sally Russell	573-443-5479
Website/email blasts	Willie Morris	445-4217/424-1421
Newsletter	Margaret Muegenburg	234-7313
Roster Booklet	TBA	
Quilt Show	TBA	
Library	Merril Winfield	573-446-8678s
Historian	Barbara Nixon	446-0773/239-1039
Friendship Star		
Winter Retreat	Judy Gieselman Willie Morris CarrolLewis	573-445-2381 573-445-4217 573-657-4532
Service Project:		
Past CEO	Dawn Heese	573-234-2540

### Day Chapter Board

President:	Carol Tummons	573-445-9174
Vice-President:	Judi Kirkpatrick	
Secretary:	Betty White	573-696-3776
Membership:	Myrna Powers Karon Huggler	573-445-0766 573-443-7410
Hospitality:	Margaret Heller Laura Eggeman	573-446-1942 573-449-7942
Exchange Blocks:	Corinne Remeika	573-449-7574
Past President:	Corinne Remeika	573-449-7574

### Starlight Piecemakers Board

President:	Boo! Kula	573-449-0346
Vice-President:	Judi Kirkpatrick	
Secretary:	Betty White	573-696-3776
Membership:	TBA	
Hospitality:	Cec	
Exchange Blocks:	TBA	
Past President:	Marilyn Russell	573-874-5702

Newsletter deadline is the Wednesday after the Executive Board Meeting at 6:30 pm, of each month. E-mail items to: [maggiemueg@aol.com](mailto:maggiemueg@aol.com) or [BTQGfeb1978@yahoo.com](mailto:BTQGfeb1978@yahoo.com).

Regular meetings of the Guild are held on the first Monday of the month at 1:00 pm and the first Thursday of the month at 7:00 pm at the Fairview United Methodist Church, 3200 Chapel Hill Rd., Columbia, Missouri.

BTQG EMAIL ADDRESS: [BTQGfeb1978@yahoo.com](mailto:BTQGfeb1978@yahoo.com)



## TREASURER'S REPORT

Submitted by  
Dennis Smith  
As of June 11, 2012

Checking Acct. Balance	\$7,879.56
Savings	1,033.56
CD's (2)	10,824.24
Balance	\$19,737.36
Number of Members	196
Fiscal Year Beginning Balance	\$11,922.48
FYTD Income	17,888.58
FYTD Expenses	21,931.50
Current Checking Acct. Bal.	\$7,879.56

### Membership Additions/Changes

#### E-Mail Address Change:

Priscilla Strube  
[quilterpris@gmail.com](mailto:quilterpris@gmail.com)

#### Birthday Change:

Beverly Christiansen  
September 9

### Quilt Show Raffles



Quilt members gathered around the Raffle Quilt at 4:00 pm with hopes that they were the winner of the beautiful quilt.

Mary Humlicek walked up and asked who won the raffle?

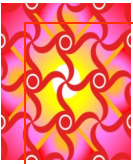
What's your name?

Mary Humlicek.

You are the winner.

Oh my gosh! You're kidding? What, me? How wonderful to win this beautiful quilt. I will cherish it forever.

The box of fabrics was won by young woman working with a vendor. She was thrilled!



### June Day Chapter Exchange Block—Corrine Remeika

I was very surprised and pleased to win the June Exchange Block for the most blocks made in 2011-2012. I've had the pattern and fabric set aside for sometime to make an Ohio Star quilt. So, suddenly, this is the time. The quilt is an on-point setting from Marsha McCloskey's Quick Classic Quilts. I love the cornflower blue, soft apple green and deep red-wine colors in the large floral print that will surround the star blocks. Thank you very much for making a block for me, especially since many of you recently made a 30's print nine -patch for me for my Day Chapter president's quilt. I am twice blessed.

Originally from the Berkshire Hills area of northwestern Connecticut, my husband Joe and I came to Columbia in 1973 and put down deep roots. Our daughter, husband, and our two grandsons and three step-grandchildren live in Harrisburg. I retired two years ago from working as a parent educator with the Columbia Public Schools' Parents as Teachers program, which I loved doing. Now I love having the time to quilt, attend meetings and visit with my quilting friends. On many Thursday afternoons I hand quilt at the Missouri United Methodist Church, part of our missions fund-raising. I love to read, take long walks, watch movies, cook and bake, in addition to quilting and other needlework.

In 2011 I completed my first two quilts; wall hangings I entered in the quilt show that year. This year I completed the large Jane Austen era medallion quilt top. I enjoy both hand and machine piecing, yet overall prefer hand piecing and hand quilting. I meet several times a month with guild members in our interest groups- currently English paper piecing, Bettina's skills building and the Innovators (we each planned a quilt and now are making a block for each of the other member's quilts). Again, thank you for taking one of my Ohio Star blocks to piece for me.



### JUNE EXCHANGE BLOCK—STARLIGHT CHAPTER — Betty White

Hi! This is Betty White (again) - winner of the Starlight Exchange Drawing. My luck has been so great, both day and Starlight winner so close together. I think I've told just about all of my story before, so I won't bore you by repeating it. I am going to be the secretary for the Starlight Chapter this year so I am looking forward to that new experience.



### Judi Kirkpatrick—Vice President, Starlight Chapter

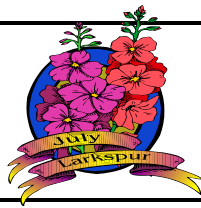
Judi, a very new member, has volunteered to serve as the Vice President of Starlight Chapter. We thought you might enjoy a brief history of her quilting background.

I am very lucky as both my grandmother and mother were excellent seamstresses. They taught me to sew at an early age. My quilting journey began in 1978 in Brookfield, Missouri. I joined a group of ladies learning to quilt from a local artist. Of course everything was done by hand, 'machine quilt, oh my no!'. We shared ideas, made each other blocks (each member had a quilt per year made by other members) and also just a good time.

My husband was transferred to Houston, Texas in 1982 and I went into quilt withdrawal until I found another group of ladies but, most importantly, I was right in the neighborhood of the annual Quilt Market. They had very different ideas and were machine piecing. That was ok but I still hand quilted. We moved back to Brookfield in 1995 and I helped form the Linn County Piecemakers Quilt Guild along with a core group of wonderful quilters. I think I held every office possible at one time or another. I still belong to that group and join them for Shop Hops. After my husband died in 2008 things really changed. I sold my home, sold our antique business and moved in with a friend in Sturgeon while working for Allstate Insurance in Columbia.

In May of this year I moved permanently to Columbia and am very happy to be part of this Guild. I decided to offer to be Vice President of the Starlight group to get more involved and to be associated with such talented quilters. The programs Jean arranged this past year will be a hard task to follow but I will do my best with your assistance in reaching out to unique and gifted quilters. Do you have a favorite speaker or teacher you know would bring a new perspective on this beautiful and timeless craft? Just let me know.

My quilt tastes tend to run toward traditional blocks and colors but I am trying to expand and try different things. I enjoy making full size quilts but smaller projects fill my home. I hope to do a program next year about "A Quilters Home or Quilting Everywhere". The Turning Twenty miniature I just finished was a mathematically challenge; however, long-arm quilting has replaced hand quilting for the moment. Thank you for making me feel so welcome in this guild.



# July 2012

**Guild related or sponsored activities are included in the Master Calendar.**

Interest groups that are currently closed are noted with ‡‡. For additional information contact person listed. New interest groups may be formed at any time. Please contact Vice CEO, Sharon Lawler, 573-696-0102 or email lawlersk@centurytel.net

## **BOARD AND CHAPTER EVENTS**

Date	Time	Event	Place & Contact
5 July	7:00 PM	<b>Starlight Piecemakers' Meeting</b> Doors open 6:00 PM	Fairview United Methodist Church Boo! Kula
2 July	9:00 AM	Day Chapter Quilt and Sew 12 Noon Shared Brown Bag Lunch	Fairview United Methodist Church Carol Tummons
2 July	1:00 PM	<b>Day Chapter Meeting</b>	Fairview United Methodist Church Carol Tummons
9 July	6:30 PM	<i>Executive Board Meeting</i> <i>Joint Ex. Boards</i>	Call Dennis Smith for location
10 July	3:00 PM	Day Chapter Board Meeting	Call Carol Tummons for location
10 July	6:30 PM	Starlight Piecemakers' Board Meeting	Call Boo! Kula for location
11 July	5:00 PM	Newsletter Deadline	Margaret Muegenburg <a href="mailto:maggiemueg@aol.com">maggiemueg@aol.com</a> 573-234-7313

## **SPECIAL INTEREST GROUPS**

12 July	1:00 PM	English Paper Piecing	Linda Sandlin/Joan Westcott Call for Location: 573-814-1629
	1:00 PM	Handmade Quilts	Suspended until further notice
12 July	9:30 AM	Sassy Stitchers (Day Appliqué)	DB Library Donna Burris 573-474-4338
2 July	10:00 PM	Skills Group/Problem Clinic	Fairview United Methodist Church Bettina Havig
11 July	2-4 PM	Small Wonders-New Group	DB Library
18 July	7:00 PM	Sometimes 30's Group	Jane Lee 573-445-1623 3711 Santiago Drive

## **‡‡CLOSED SPECIAL INTEREST GROUPS**

	No Meeting	‡‡ Row by Row/Pushing the Limits	Jackie Berry 660-263-5429
26 July		‡‡Red Work	Myrna Powers 573-445-0766
9 July	3:30 PM	Innovators	Joan Westcott 573-874-8160

N.B. Interest groups that are sanctioned by the guild and are open to any member are listed in the newsletter. If anyone is interested in starting a new interest groups or stitching group they are welcome to do so. Please contact Sharon Lawler, Vice CEO, with information regarding interest group meetings. Feel free to attend any group listed in the calendar. It's advisable to call the contact for up to date information.

CEO Notes

Can you believe it? We'll be 35 in 2013... sounds great to me!

Most of you know that I'm a number-cruncher – and I've been crunching. As of today, June 11, we've received 51 membership forms for 2012-13 and 19 of them are volunteers for the tasks that make our guild go – 37%! And we got 5 program suggestions, too. Keep'em coming – we need both your support and ideas.

I invite you to help me do the things that will make BTQG all it can be. This means you must let me know – in person, by e-mail, telephone, smoke signal or whatever – your interests as well as your concerns. I'll do my best to represent your points of view in related discussions and keep our guild moving forward. Deal? I hope so; together, members of BTQG are a potent force.

Special thanks to all who served our guild this past year. Looking back, it was a really good year: many excellent programs; classes you can't find anywhere else; fabulous eats & treats, and best of all – time for visits and getting to know folks who share our common interest - quilts. I enjoyed it a lot and look forward to more good times with BTQG. dts



**Booneslick Trail Quilt Guild  
2012 Annual Meeting**

The 34th Guild Annual Meeting was held on June 2 at the Columbia Country Club. A great breakfast along with lots of sharing with Guild friends made for a relax and enjoyable meeting.

The meeting was called to order by CEO Dawn Heese. The minutes of the 2010-2011 were read and approved. A motion was made to approve the slate of officers as presented. The motion passed. Judi Kirkpatrick volunteered to serve as the vice-president of the Starlight Piecemakers with the recommendation of the President Boo! Kula. Officers of the Guild must have been a member for at least one full year. Judi had not meet that guideline by the annual meeting.

The 2012-2013 budget was approved.

Alice Leeper introduced the speaker Pat Spath who gave a trunk show of all of her amazing designs for nickel quilts. She illustrated how many of the blocks were constructed and convinced us that it was a lot easier than it looks.

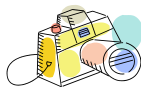


May Day Chapter Meeting  
Creating Sparkling Sets  
Bettina Havig

Save the Date  
February 22-24, 2013



It Will Be A Hoot!



May Starlight Meeting  
Embellishing Your Quilts  
Row by Row/Pushing the Limits



Karon Huggler and  
Christy Grey

Patti Cantu and  
Peggy Swartz



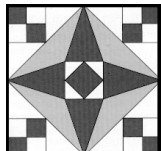
Mona Stevenson and  
Suzanne Henage

Photos by Barb Nixon



**Loose Threads Quilt Show**  
"Celebrate with Quilts 2012"  
In conjunction with St. Charles Community College  
Saturday, October 6<sup>th</sup> - 9 am to 5 pm  
Sunday, October 7<sup>th</sup> - 10 am to 4 pm  
St Charles Community College  
4601 Mid Rivers Mall Drive St. Peters, Mo. 63376  
\$6 Donation for Admission  
Directions : From I 70 – Drive south on Mid Rivers Mall Drive for approximately 3 miles, the campus is located on the right side of the street. Make a right turn onto College Boulevard. Show is in College Center.

MAY  
STARLIGHT  
MEETING



P.O. Box 542  
Columbia, MO 65205-542



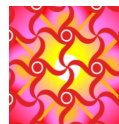
**The Stars and Stripes forever.....**

**J  
u  
l  
y  
  
B  
i  
r  
t  
h  
d  
a  
y  
s**

- |                 |         |
|-----------------|---------|
| Pat Beach       | July 1  |
| Othella Reed    | July 2  |
| Edith Leeper    | July 3  |
| Lauri Rich      | July 9  |
| Sally Johnson   | July 10 |
| Corrine Remeika | July 11 |
| Fern Turner     | July 11 |
| Rachel White    | July 11 |
| Susan Kelley    | July 21 |
| Nancy Skelly    | July 21 |
| Sue Turnquist   | July 24 |
| Frances Cope    | July 26 |
| Nancy Graviett  | July 27 |
| Nancy Kennedy   | July 29 |
| Mary Vincenz    | July 29 |



**Starlight Piecemakers**  
**Thursday, July 5, 2012**  
**7:00 PM**  
**Business Meeting and Program**  
**Quilting: A Journey with Life**  
**Ann Hazelwood**  
**Fairview United Methodist Church**  
**Bring a Quilt for Show and Tell**



**Day Chapter**  
**Monday, July 2, 2012**  
**9–12 noon Sit and Sew**  
**12 noon: Brown Bag Lunch/**  
**Bring items to share**  
**1 PM: Business Meeting and Program**  
**Lincoln's State Historic Site in 1830**  
**Shirley Locksus**  
**Fairview United Methodist Church**  
**Bring a Quilt for Show and Tell**



**BTQG is on the Web**  
**[HTTP://BTQG.MISSOURI.ORG](http://BTQG.MISSOURI.ORG)**

**Our Meeting Place**  
**Fairview United Methodist Church**  
**3200 Chapel Hill Road**  
**Columbia, MO 65203**

## Redwork Christmas Workshop By Ann Hazelwood

Friday, July 6, 2012, 9:00 AM to 12:00 PM

Hy-Vee (Upstairs meeting room at west entrance)  
405 E. Nifong Blvd. Columbia MO 65201



This workshop is a beginner's introduction to embroidery as it relates to Redwork. Ann will begin with a little history and show Redwork pieces before you start sewing.

When Ann owned Patches, a quilt shop in St. Charles, MO, she designed a block of the month with small Christmas designs. She produced all of them in one quilt, which she will bring to the workshop. You will get to choose which design you want, which is part of your kit. The kit also provides a pieced arrangement or you can use your finished project as an ornament. She will have the other designs for purchase at \$3.00 each to do the complete set.

**Participants will receive the kit, which includes fabric, pattern and floss. Participants need to bring embroidery needles, small scissor and a hoop. A red jellyroll pen is optional.**

This workshop is limited to 20 participants.

*Detach and return registration to:*

Jean Brueggenjohann, 410 Cumberland Rd., Columbia, MO 65203, 573 817-1679  
Brueggenjohannj@missouri.edu

**Registration must be mailed postmarked not earlier than June 5, 2012**

Fee: \$25.00 must be included with registration form. Make check payable to BTQG.  
(See BTQG directory for cancellation policy)

---

### Redwork Christmas Workshop Friday, July 6, 2012

Name: \_\_\_\_\_

Address: \_\_\_\_\_

Phone: \_\_\_\_\_ Email: \_\_\_\_\_



# BOONESLICK TRAIL QUILTERS' GUILD



## Membership Form July 1, 2012—June 30, 2013

Annual Dues \$30—Payable to BTQG

Mail form & check to BTQG, PO Box 542, Columbia, MO 65205

OR Return to Membership Desk during a Guild's Chapter Meeting

*Please fill out the following information, EVEN if it is the same as last year!*

Name: \_\_\_\_\_ New \_\_\_\_\_ Renewal \_\_\_\_\_

Address: \_\_\_\_\_

City/State/Zip: \_\_\_\_\_

Home Phone # \_\_\_\_\_ Cell Phone # \_\_\_\_\_

Work Phone # \_\_\_\_\_ Fax # \_\_\_\_\_

Email address: \_\_\_\_\_

Web Site: \_\_\_\_\_

Birthday: Month \_\_\_\_\_ Day \_\_\_\_\_ Year you joined the Guild: \_\_\_\_\_

*Please NOTE: All information requested above will be published in the Guild's directory. If you do not want the information published, DO NOT include it on the form above.*

Newsletter preference: \_\_\_\_\_ US Mail \_\_\_\_\_ email only @ address above

Email notice preferences: \_\_\_\_\_ All (Notices, Reminders, Friendship Star requests)  
\_\_\_\_\_ NONE

On which committees are you willing or interested in serving:

### Executive Committees

### Chapter Committees:

Quilt Show	<input type="checkbox"/>
Library	<input type="checkbox"/>
Newsletter	<input type="checkbox"/>
Historian	<input type="checkbox"/>

Service Project	<input type="checkbox"/>
Bare Bones Retreat	<input type="checkbox"/>
Winter Retreat	<input type="checkbox"/>

	<i>Day Chapter</i>	<i>Starlight</i>
Membership	<input type="checkbox"/>	<input type="checkbox"/>
Hospitality	<input type="checkbox"/>	<input type="checkbox"/>
Friendship Blocks	<input type="checkbox"/>	<input type="checkbox"/>
Ad Hoc	<input type="checkbox"/>	<input type="checkbox"/>

Do you have any suggestions for a program? Do you have a collection of quilts you would be willing to offer for a trunk show, please let us know by writing a note on this form. Other comments and suggestions are also welcome. (Please feel free to use the back side of this form for comments.)