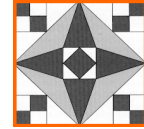


Quilt-A-Gram



Editor: Marilyn Wooldridge

BOONESLICK TRAIL QUILTERS' GUILD



Starlight Piece makers' Chapter Meeting

Thur. Nov 7, 2013

Doors Open at 6 pm

Meeting and Program at 7 PM
Fairview Methodist Church

Our October Starlight Piecemakers' visit with Jean Parsons about the Cornell Quilts was very enjoyable. After her presentation, she fielded questions of all kinds about the quilt collection itself, as well as her amazing digital textile printer, which had many of us drooling with envy! I'm looking forward to our private tour in the spring.

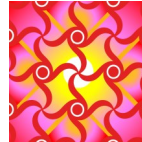
November's meeting will host Toby Lischko with her mini-quilts. She has a website if you'd like to peek in advance. <http://www.gatewayquiltsnstuff.com/>

For show and tell, I invite you to bring any mini-quilts to share, as well as any other quilts you'd like to show off to the group. The Mystery Quilt Interest Group will be bringing their items too. I always enjoy seeing what everyone has been working on.

The doors will open at 6pm; the meeting will begin at 7pm.

See you on November 7th!

Kaye Mallory



Day Chapter

Monday, Nov 4, 2013

9:00 am Sit 'n Sew

1:00 pm Meeting, Program, Show and Tell

Fairview Methodist Church

Fall is here...cooler temperatures, leaves turning, Halloween and Thanksgiving, and Football! I am probably the only member that enjoys football. But when the season changes, so does our quilting, especially the colors that we choose in fabric.

We are in for a treat in November as we will be showing the quilt collection of the late Sally McMullan. So mark your calendars for Monday, November 4 and plan to spend the day with us. Jerry Ricker will not be here but does plan to come back in January. So bring your pencils and scissors to be sharpened then.

Also start thinking of what you are making for the December Auction. We have our same auctioneer, Dan, coming from Kansas City. You may want to bake something or bring some canned products or provide fabric, quilting items or surprise us! But do be thinking about it.

Happy Quilting!

Mary Petersen, Day Chapter President

Security: Before there is a Problem

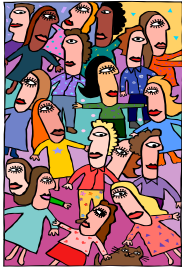
At the October 14th meeting, the Board discussed the security risk of leaving the upstairs church doors unlocked, particularly during our Thursday evening chapter meetings. The Board is thinking that we should be proactive and lock the upstairs doors when the speaker begins their program. This will give late arrivals some time to park in the upper parking lot and get into the building before we lock it around 7:30.

Even though Pastor Kate assured us that there have been no problems, she thinks that locking the door when no one is upstairs might be a good idea, too. She has also given us her home phone number to call in case a guild member sees something that needs immediate attention or a door won't lock when we are leaving. She lives close by and won't mind driving over.

Locking the upstairs door has pros and cons: security vs. inconvenience of guild members. We will discuss possible solutions at the November chapter meetings. Be ready to share ideas then.

Thanks.

Your CEO, Sharon Lawler



Quilt-A-Gram

Published monthly by Booneslick Trail Quilters' Guild, a not-for-profit organization, established in 1978, and dedicated to educating its members and the community in the art and appreciation of quilt making.

2013-2014 Board of Directors

CEO	Sharon Lawler	573-696-0102 (home)
Vice CEO	Hank Botts	573-424-1190 (cell)
Secretary	Betty White	573-696-3776 (home)
Treasurer	Judi Kirkpatrick	660-734-0358 (cell)
Day Chapter President	Mary Petersen	573-446-2335 (home) 573-289-4120 (cell)
Starlight Chapter President	Kaye Mallory	660-349-5128 (cell)
Past CEO	Dennis Smith	573-445-7787 (home)

Appointed Chairpersons

Day Chapter Program Chair	Brenda Austin	573-657-2332 (home)
Starlight Program Chair	Alice Leeper	573-489-1458 (cell)
Quilt Show	Dennis Smith	573-445-7787 (home)
Library	Merril Winfield	573-446-8676 (home)
Historian	Virginia Peterson	573-442-0042 (home)
Service Project	Irmgard Marsh Connie Richards	573-230-6196 (cell) 660-346-1577 (cell)
Hospitality	Christi Brietzke	573-449-3405 (home)
Membership	Corinne Remeika	573-449-7574 (home)
Newsletter Editor	Marilyn Wooldridge	660-848-2213 (home) 573-289-2957 (cell)
Membership Booklet	Alice Leeper	573-489-1458 (cell)
Webmaster	Willie Morris	573-445-4217 (home)
Retreat (ad hoc)	Barb Nixon	573-239-1039 (cell)

Newsletter deadline is the Wednesday after the Executive Board Meeting at 6:30 pm, of each month.
E-mail items to: mmwooly@yahoo.com

BTQG EMAIL ADDRESS: BTQGfeb1978@yahoo.com



TREASURER'S REPORT

Submitted by
Judi Kirkpatrick
As of 9/30/13

Checking Acct. Balance	\$11,329.52
Savings	\$1,033.72
CD's (2)	\$10,838.53
Total Combined Balance	\$23,201.77
Number of Members	167
Fiscal Year Beginning Balance	\$8,965.14
FYTD Income	\$6,739.66
FYTD Expenses	\$4,375.28
Current Checking Acct. Bal.	\$11,329.52



Card Showers

Raise a Friend's Spirit

Marilyn Russell, a long time guild member, is dealing with some major health issues. Let's have a card shower to let her know how much she is loved. Please send your "thinking of you" card of encouragement to Marilyn Russell
1801 Bettina Drive
Columbia MO 65202.

***Executive Board of Directors
monthly meetings minutes
are located on the Guild's
webpage.**

Regular meetings of the Guild are held on the first Monday of the month at 1:00 pm and the first Thursday of the month at 7:00 pm at the Fairview United Methodist Church, 3200 Chapel Hill Rd., Columbia, Missouri.

Annual dues are \$30 for the fiscal year of July 1 to June 30.



**Corrections/Additions
to the
2013-2014 BTQG
Membership Directory**

Bonnie Licklдер – lckldr@centurytel.net

Linda Rexroth – Fulton, MO 65252

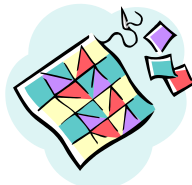
Please make the above corrections in the orange Membership Directory that you received at the November Chapter Meetings.

Hello Ladies!

This is Irmgard reporting on the good stuff we got done during the Starlight Piecemakers meeting. Connie brought in two tubs of finished quilts to have labels put on them. With the help of Bonnie Licklдер, Lynn Hill, Barb Nixon, Linda Karns and myself, we got all but 3 quilts labeled. Great big Thank You to those ladies. We appreciate all the help we can get with the quilts. We still need some quilted if some of you ladies with quilting machines could help us out. This is even more important since Connie was able to contact some people to donate the quilts to.

As of the meeting on Monday, Connie delivered 20 quilts to the Rainbow House Organization. She delivered 11 quilts to True North, the battered women's house, and 15 quilts to Ronald McDonald House. They are asking for smaller quilts for babies, so the quickie flannel blankets are going to be very important. We will have some of those ready for you fine ladies to take and make on the next meeting in November. Remember, a happy lady is a quilting lady. I cannot express how important it is for you all to help us in making these quilts and blankies for these places. They were very excited to get the quilts and thanked us profusely. It gives me a warm place in my heart to know that someone who is sad and lonely is sleeping tonight under a quilt we made. God bless each and everyone of you and again THANK YOU!!!!

auf Wiedersehen,
Irmgard and Connie



REVEAL TIME

For those of you in the Mystery Quilt interest group, November is "Reveal Time." Please bring all projects that you have completed as part of the Mystery Quilt group. We will show these during the Show and Tell portion in both of the chapter meetings in November.

Our next Mystery Quilt project will not start until January since the holiday season often becomes so busy for many of us.

Cecile Mazan



Hospitality News

We are going to change a few little things about Hospitality this year. First, we will set up for the Day Chapter at about 11am instead of 9am. If you are a 9am person and want coffee or other items you are welcome to get the items and make your own. The set up for Guild meeting though will be at 11am.

Next, at Starlight Piecemakers, we will need people to help with coffee, hot water and clean-up. On the nights when no one volunteers, we will have water. The set up really is easy and clean-up is not bad when all jump in to share the load. Please consider helping at least once this year!



I wish to thank Ustena Simenson for her help with Starlight Piecemakers in Oct and Pat Abrams, Barb Nixon, Susan Ferrugia and Janet Sampson for help with the Day Chapter hospitality.

This month Rachel White will hostess for Starlight Piecemakers and Emma Jo Raines, Marge Hicks and friends will hostesses for Day Chapter. Please be sure to thank these ladies when you see them! Hospitality won't happen without their help!



November 2013

Guild related or sponsored activities are included in the Master Calendar.

Interest groups that are currently closed are noted with ‡‡. For additional information, call the contact person listed. New interest groups may be formed at any time. Please contact Vice CEO, Hank Botts, 573-424-1190 or email jackandhank@mchsi.com

BOARD AND CHAPTER EVENTS

Date	Time	Event	Place & Contact
Nov 4	9:00 AM	Day Chapter Sit and Sew	Fairview United Methodist Church Mary Petersen 573-289-4120
Nov 4	1:00	Day Chapter Meeting	Fairview United Methodist Church Mary Petersen 573-446-2335
Nov 7	7:00 PM	Starlight Piecemakers Doors open 6:00 to sew, visit, eat	Fairview United Methodist Church Kaye Mallory 660-349-5128
Nov 11	6:30 PM	<i>Board of Directors Meeting</i>	at DBRL (library) Conf Rm A Sharon Lawler 573-696-0102
Nov 13	6:30 PM	Newsletter Deadline	Marilyn Wooldridge mmwooly@yahoo.com 660-848-2213(h) 573-289-2957 (c)

SPECIAL INTEREST GROUPS

		Skills Group/Free Motion Quilting (Class suspended until further notice.)	Fairview United Methodist Church class by Marilyn Smith
Nov 13	10:00 AM	Small Wonders--New Group	at Oasis contact Karon Huggler 443-7410
Nov 14	9:30-11:30	Sassy Stitchers (Day Appliqué)	at DBRL (library) contact Donna Burris 474-4338
Nov 18	1:00 PM	EZ2B Stitchers (Handmade Quilts)	at Quilt 4 U contact Linda Sandlin 814-1629
Nov 21	9:00 AM	English Paper Piecing	For location, contact Joan Westcott 874-8160
	By email	Mystery Quilt	contact Cecile Mazan cemmazan@gmail.com

‡‡CLOSED SPECIAL INTEREST GROUPS

Nov 11	2:30 PM	‡‡Innovators	Joan Westcott 874-8160
No Mtg in Nov	9:00 AM	‡‡Red Work	Myrna Powers 573-445-0766

Interest groups that are sanctioned by the guild and are open to any member are listed in the newsletter. Interest groups that are not open to all guild members (i.e. closed because they are full) will not be listed in the calendar. If anyone is interested in starting a new interest group or stitching group they are welcome to do so.

Please contact Hank Botts, Vice CEO, with information regarding interest group meetings. Feel free to attend any group listed in the calendar. It's advisable to call the contact for up to date information. Hank can be reached at 573-424-1190 or jackandhank@mchsi.com.

“AND NOW A WORD FROM YOUR CEO”

The Board decided to have 3 copies of Board minutes available at the Membership table for you to read before and after each chapter meeting. The Board will continue to incorporate decisions made at Board meetings within the President’s newsletter columns and in my CEO column. We will also post separate news items in the newsletters if the topic is best addressed in its own article, for instance, plans for the May 2014 quilt show. We will sometimes ask those present at chapter meetings to give input or to complete a survey about a topic under discussion. The Board’s desire is to keep you informed and to provide you with a good experience as a member of BTQG.

Any time that you have questions or suggestions, let someone on the Board know. You are welcome to attend any of the monthly Board meetings. See the calendar page in the most current newsletter for date and location. As in past years, it is not always possible to meet at the same location each month.

This is the first year at BTQG has had Membership, Hospitality, and Chapter Program Chairpersons as members of the Board. It seems to be a positive change in your By Laws, in that the requirement for each chapter to have separate planning meetings is now gone and the potential exists for membership and hospitality inventory to be better managed under one umbrella. Our Board meetings have seemed longer so far this year, possibly because business for both chapters is now part of the Board meeting. The discussions have been great, however, with many ideas generated but always an eye on tradition.

A big Thank You goes to volunteers who help with needs during chapter meetings such as room set up, hospitality, and membership. Many of you are also involved with various needs of the guild’s Service Project. Many of you will help over the next six months in preparation for the Quilt Show. I applaud each of you for your service in keeping our guild strong and growing. Keep up the good work.

Sharon Lawler
CEO for 2013-2014

QUILTERS’ BOOK GROUP



With most people responding with preferences and non-options I have settled on Tuesday, Oct. 29, 1-3 p.m. We will meet this time at the Daniel Boone Regional Library. The consensus was overwhelming for day time (only one hoped for evening) and Tuesday fit the most people.

Our first read will be NO TIME ON MY HANDS, by Grace Snyder as told to Nellie Snyder Yost. The first meeting will be organizational and the second meeting will discuss the book; possibly some time in early Dec.

I have found that NO TIME ON MY HANDS is easy to find online, both new and used ranging from about \$3.50 to the full retail of \$19.95. There is one copy in the guild library and one in the DBRL. Presently those copies are checked out or on hold.

As for future titles, I have a couple of suggestions. Please bring suggested titles to the first gathering. If possible, bring the book with you to the meeting. We can build from there.

Anyone who is interested should feel welcome to come to the first meeting.

***Thanks for your interest,
Bettina Havig***

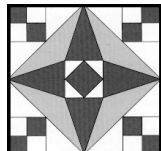
2014 BTQG QUILT SHOW

Your Executive Board members have been noodling (eg, thinking, discussing) about how to have a successful quilt show during quirky economic times. Historically, our quilt shows have provided the income needed to pay for monthly chapter programs and other activities not covered by membership dues. It has been suggested that we have a spring show, May 10 & 11, staged in the lower level of the Fairview United Methodist Church. Church office staff is agreeable and the rental cost will be modest.

To set up and host a successful quilt show requires solid planning and lots of membership involvement. Planning tasks include advertising and marketing, programs and publications, layout design, props, quilt check-in and check-out, coordination of volunteers, selection of vendors, special activities like a silent auction or sales of handmade goods. For quilt show days, members take care of selling tickets, serving as hostesses, and managing activities like the raffle quilt, marketplace, silent auction, etc. If the show is limited to quilt displays, the tasks and membership time commitments are reduced. Given the space available, including vendors isn’t an option.

Preliminary planning will continue and you’ll get an update at our November chapter meetings. Get your quilts ready for display and let me know if you can help with a spring show.

Dennis Smith, Novice Quilt Show Chairperson



P.O. Box 542
Columbia, MO 65205-542

**FYI -
*Executive Board of
Directors monthly
meetings minutes are
located on the Guild's
webpage.**

November Birthdays

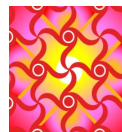
- Cathy Forbes Nov 2
- Christy Pickell Nov 2
- Pat Hilderbrand Nov 2
- Dorothy Leeper Nov 4
- Dennis Smith Nov 9
- Carolyn Hall Nov 17
- Mary Gaston Nov 18



Starlight Piecemakers' Chapter Meeting

Thursday, Nov 7, 2013

Doors open at 6 pm
Meeting and Program at 7 pm
Fairview United Methodist
Church
Bring a Quilt for Show and Tell



Day Chapter Meeting

Monday, Nov 4, 2013

9—1 Sit and Sew
1—Business Meeting and
Program
Fairview United Methodist
Church



BTQG is on the Web

[HTTP://BTQG.MISSOURI.ORG](http://BTQG.MISSOURI.ORG)

O u r M e e t i n g P l a c e

Fairview United Methodist Church

3200 Chapel Hill Road

Columbia, MO 65203