

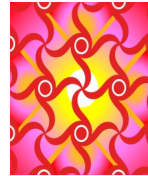
Quilt-A-Gram

Editor: Margaret E. Muegenburg

BOONESLICK TRAIL QUILTERS' GUILD



Starlight Piecemakers'
Thur. December 1
Doors open at 6:00
Dinner at 6:30
Fairview Methodist Church



Day Chapter
Monday, December 5, 2011
9 AM- 12 Noon: Sit and Sew
and Bidding on Silent Auction Items
12 Noon: Holiday Potluck Luncheon
1 PM: Auction followed by Show and Tell
Fairview Methodist Church

The Starlight Piecemaker chapter invites you to the December Holiday dinner on December 1st. We will open at 6:00 p.m. Dinner will be served at 6:30 p.m. Turkey and ham will be provided. The alphabet method of food distribution suggests:

- A—H: Desserts
- I—P: Vegetables, salads or sides
- Q-Z: Bread, cheese and crackers, fruit.

Our program for December will be 'Friendship' presented by all the members. The suggestion is for dinner with p.m. the drawing blocks will occur—dessert will be served. At this time it is suggested members re-seat themselves at a table where they are able to become acquainted with new friends. We hope everyone enjoys the chance to visit, compare sewing tips and troubles with old and new friends. Please provide essential serving item for your scrumptious holiday dinner item.



members. The suggestion is for dinner with p.m. the drawing blocks will occur—dessert will be served. At this time

This month we celebrate the coming of winter and the Holidays: Christmas, Hannukah, and the New Year, 2012. We celebrate having more indoor time for quilting and for reflecting on our experiences during 2011 - the shared times with quilting friends and the programs we have enjoyed. What better way to celebrate than sharing a feast and companionship with those same friends.

Our hospitality committee (Marcy Strube and Margaret Heller) have arranged for trays of beef, ham, and turkey; festive "dishware" and utensils; and hot tea and coffee. Y'all bring a dish to share: appetizers, breads, fruits, veggies/casseroles, and of course some desserts.

After we feast and visit, we'll have our auction, with our guest auctioneer Dan Griessel. So, please bring an item to donate for the auction—a few fat quarters tied with a bow, a basket of goodies; a certificate for donated services like binding, making a holiday dessert; quilted items; canned goods; a quilting book or tool; basket of fruit; movie passes; candles. Just have fun with it. Remember: bring a check or cash so you can bid and buy.



November Day Chapter Photo Sampling

Speaker Judy Wampler, Carthage, provided an outstanding program based upon her work using nature and everyday items, antiques, as her theme.



The table contains a "Wash on Monday" red work and some of her utensils she adds to her quilts including a butter churn, hog scraper and coffee grinder. The middle quilt is called "The Long Winter".



Marilyn Smith proudly displays her quilt during Show and Tell.

We'll end our afternoon with Show and Tell. Let's see some winter scenes and themes, Christmas or Hanukah quilts, wall-hangings, or table runners.

As we approach Thanksgiving, I want to thank all of the Day Chapter board and committee members for their dedicated and cheerful work thus far this program year. I also want to thank all of the members who have encouraged, helped, and expressed appreciation to me as your president this year. I have been heart-warmed by my interactions with you. I have found that by serving I have felt welcomed and included as an integral part of this group of caring women. Now, I join others who highly recommend serving as president (even if, like me, you're not crazy about standing up in front of the whole group and leading) or in any of the other board and committee positions.

Hope you all have had a Happy Thanksgiving and see you on December 5th.

Corinne



Quilt-A-Gram

Published monthly by Booneslick Trail Quilters' Guild, a not-for-profit organization, established in 1978, and dedicated to educating its members and the community in the art and appreciation of quilt making.

2011-2012 BTQG Executive Board

CEO Chairman:	Dawn Heese	228-8248
Vice-Chairman:	Bettina Havig	449-1602 /819-1774
Secretary:	Judy Gieselman	445-2381
Treasurer:	Dennis Smith	445-7787
Website/email blasts	Willie Morris	445-4217/424-1421
Newsletter	Margaret Muegenburg	234-7313
Roster Booklet	Alice Leeper	442-6121/489-1458
Quilt Show	Tammy Bush, Chair Alice Leeper, Vice-Chair	256-8350/529-1729 442-6121/489-1458
Library	Linda Karns Pat Leistner	892-7875/999-0038 446-0811
Historian	Barbara Nixon	446-0773/239-1039
Friendship Star	Ann Rennier	573-424-7459
Winter Retreat	Kristi Savage-Clarke	657-4211/489-1885
Service Project:	Betty White Bonnie Wakefield	696-3776/999-0118 446-4981
Past CEO	Alice Leeper	442-6121/489-1458

Day Chapter Board

President:	Corinne Remeika	449-7574/864-3074
Vice-President:	Lauri Murphy	446-2476/808-2194
Secretary:	Nancy Ankeney	445-6583/356-5633
Membership:	Mary Petterson Myrna Powers	446-2335 445-0766/864-0120
Hospitality:	Margaret Heller Marcy Strube	446-1942/874-0907
Friendship Blocks:	Francis Cope Beverly Christiansen	445-8121
Past President:	Tammy Bush	256-8350/529-1729

Starlight Piecemakers Board

President:	Marilyn Russell	874-5702
Vice-President:	Jean Brueggenjohann	815-0082/864-5979
Secretary:	Robin Heider	446-6254
Membership:	Diana Fisher Cathy Forbes	875-1086 445-9909
Hospitality:	Boo! Kuhla Irmgard Marsh	449-0346/268-3733 230-6196
Friendship Blocks:	Julie Alsberge Connie Howard	449-1863/424-1769 256-3076
Past President:	Dawn Heese	228-8248

TREASURE'S REPORT

Submitted by

Dennis Smith

As of November 14, 2011

Checking Acct. Balance	\$11,959.12
Savings	1,033.38
CD's (2)	10,817.57
Balance	\$23,810.07
Number of Members	185
Fiscal Year Beginning Balance	\$ 11,922.48
YTD Income	7,087.75
YTD Expenses	7051.11
Current Checking Acct. Bal.	\$11,959.12

BTQG Membership Additions and Changes

Renewals

Kathy Ellsworth

3701 Chatham Drive
Columbia MO 65203
(H) 573-443-0032
kepray@mchsi.com
Birthday: October 29

Mary Gaston

4001 Franks Lane
Selma, IN 47383
(H) 765-747-4049
(C) 765-808-1106
(W) 765-282-2767
mrygstn@aol.com
Birthday: November 18

Libby Luetjen
1113 South Tayside Circle
Columbia MO 65203
(H) 573-875-0129

E-Mail Changes

Jane Lee

janeandchloesews@yahoo.com

Virginia Hendley

vhendley@centurytel.net

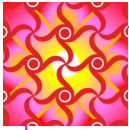
Regular meetings of the Guild are held on the first Monday of the month at 1:00 pm and the first Thursday of the month at 7:00 pm at the Fairview United Methodist Church, 3200 Chapel Hill Rd., Columbia, Missouri.

Annual dues are \$30 for the fiscal year of July 1 to June 30.

BTQG EMAIL ADDRESS: BTQGfeb1978@yahoo.com



Newsletter deadline is the Wednesday after the Executive Board Meeting at 6:30 pm, of each month.
E-mail items to: maggiemueg@aol.com or BTQGfeb1978@yahoo.com



November Day Chapter Friendship — Robin Heider

'Tightwad quilter' Robin Heider calls herself. During her seven years of quilting she has found good fabric and UFO's at garage sales. She states that she rarely purchases fabric at retail prices and has accumulated a large stash of fabrics to draw from for a quilting project. Using men's shirts, Robin has created a few 'memory quilts'.

Robin and her husband, Curtis, have been married 24 years. This is their first year as empty nesters as both of her children are off at college. When both of the kids return for holidays our home takes on a entire different tenor she states. We enjoy their visits and the quiet time after they have returned to school.

When I quilt I enjoy listening to audio books. The audio books allow me to sew and read at the same time which is a time saver and very enjoyable. Robin indicates she does pickup a book often to read it while curled under one of her quilts.

Boxed squares is the pattern Robin has chosen for her Friendship quilt. It has a great look and truly fun with the combination of many scrappy pieces. The pattern requires two strips of fabric to make two blocks. She hasn't decided on the type of fabric but knows everyone will have something in their stash to bring it too life.

Quilt Show Update

The Quilt Show Committee has begun work on the June 1012 Quilt Show scheduled for the dates of June 11th thru the 14th.

Vendors: E-mail invitations have gone out to our quilt show Vendor list. We will be following up with invitation letters. If you have a favorite vendor that you'd like to be sure gets an invitation, e-mail me—with their name, address, phone number and e-mail address to rtmbush@gmail.com

Committee Chairs: We are still looking for two committee chairs.

Marketplace Chair—To manage the development and pricing of items to sell at the quilt show marketplace. You do not have to make the items yourself. Once we decide what we want to make, we will coordinate guild members to help make the items. This year, the marketplace will have fewer types of items and will be more focused on what we think will sell to quilt show visitors in June, including the 300 long-arm quilters coming for the conference.

Set-up Coordinator— Duties are different this year, you do not have to create the show layout! Kim Diamond has already agreed to do the layout for the show. We are looking for someone with great organizational skills. Brute strength is not required.

Be part of a dynamic new quilt show committee! Volunteer today.

Quilt Show Theme & Logo: We have a working theme that is fun and whimsical. We will reveal the theme and the new logo at the January meetings. Stay tuned.

Challenge Quilt: You will have the choice of two different colors of this year's Challenge Quilt fabric—a bright pink or a bright green. The theme for the challenge is "Anything but Square". The final product must be quilted (2) layers of fabric with batting but it can be a wall hanging or a wearable. It's up to you how you interpret the theme. The official quilt rules will be published in the January newsletter. Fabric packets will be available for pick up at the December meetings.

Tammy Bush, 2012 Quilt Show Chair
573-256-8350 rtmbush@gmail.com



Bring Us Your Orphan Blocks!

Do you have orphan blocks—left over blocks—unfinished projects that you're tired of seeing? Donate them to the Quilt Show Marketplace.

We are going to be assembling sampler quilt tops for sale at the quilt show in June. We are told that long arm quilters buy quilt tops to use to perfect their quilting technique. Apparently they would rather practice on a top they own than a client's pride and joy!

We are interested in any quilt blocks. Old blocks, ugly blocks, half-finished tops, tops you found at flea markets.

Do you have the skill to create harmony out of a mismatched set of blocks? If so, we want your help. Call Tammy Bush at 573-256-8350 and she can fill you in on what we are planning.

Would you be willing to make some blocks for us? If so, call Tammy and let her know.

By the way, if you'd like to chair this effort, we'd love to have you. The more hands that work on this project the more work we will get done.

Your quilt show co-chair, Alice Leeper
573-489-1458 Alice@AliceLeeper.com

Friendship Star Block

The tradition of Friendship Star blocks continue to provide a happy memory of the treasured BTQG friendships in our guild.

If you know a guild member who is going through a difficult time, this is just the quilt block to let them know their quilting friends are thinking of them.

First thing, they need to be asked if they would be open to receiving a block. Sometimes good intentions can backfire. They need to give their permission.

Second, they need to choose the colors. Trust me...they get to choose!

Third, contact Ann Rennier with the information. It will be sent out via e-mail blast.

Last & very important, get busy making a Friendship Star block!

Contact: Ann Rennier 573-424-7459
ann@rennier@net





December 2011

Guild related or sponsored activities are included in the Master Calendar.

Interest groups that are currently closed are noted with ‡‡. For additional information contact person listed. New interest groups may be formed at any time.

Please contact Vice CEO, Bettina Havig, 573-449-1602 or email bettinaqc@socket.net

BOARD AND CHAPTER EVENTS

Date	Time	Event	Place & Contact
1-Dec	6:00 PM	Starlight Piecemakers' Meeting Doors open 6:00 pm for Holiday Dinner	Fairview United Methodist Church Marilyn Russell
.5-Dec	9:00 AM	Day Chapter Quilt & Sew 9 am—noon	Fairview United Methodist Church Corrine Remeika
5-Dec.	12:00 noon	Day Chapter Meeting Holiday Celebration at 12:00 noon	Fairview United Methodist Church Corrine Remeika
12-Dec	6:30 PM	<i>Executive Board Meeting</i>	DB Library
13-Dec	3:00 PM	Day Chapter Board Meeting	Call Corrine Remeika for location
13-Dec	6:30 PM	Starlight Piecemakers Board Meeting	Library/Marilyn Russell
14-Dec	5:00 PM	Newsletter Deadline	Margaret Muegenburg maggiemueg@aol.com 573- 234-7313

SPECIAL INTEREST GROUPS

8-Dec	9:30 AM	Sassy Stitchers (day appliqué)	Library Willie Morris 573 445 4217
8-Dec	1:00 PM	English Paper Piecing-call for location	Linda Sandlin/Joan Westcott 573-814-1629
No meeting	7:00 PM	Sometimes 30's Group	Jane Lee 573-445-1623 3711 Santiago Dr
No meeting	no meeting	Quilt History Interest Group	
19-Dec	1:00 PM	Handmade Quilts	Linda Sandlin 573-814-1629 5900 Redwing Drive
1-Dec.	2-4 PM	Small/Miniature Quits-NEW	DB Library
No meeting		‡‡ Row by Row//Pushing the Limits	Jackie Berry 660-263-5429
No meeting		‡‡ Red Work	Myrna Powers 573-445-0766

Interest groups that are sanctioned by the guild and are open to any member are listed in the newsletter. Interest groups that are not open to all guild members (i.e. closed because they are full) will not be listed in the calendar. If anyone is interested in starting a new interest groups or stitching group they are welcome to do so.

Please contact Bettina Havig, Vice CEO, with information regarding interest group meetings. Feel free to attend any group listed in the calendar. It's advisable to call the contact for up to date information. Bettina can be reached at 573-449-1602 or bettinaqc@socket.net.



Library News

More new books have arrived:

Allie Aller's Crazy Quilting: Modern Piecing & Embellishing Techniques for Joyful Stitching gives ideas and easy-to-learn techniques for making contemporary crazy quilts. It includes materials and tools, creating your own fabrics, stitches and embellishments, and four ways to build a crazy quilt block.

Flip Your Way to Fabulous Quilts: Take Folded Corners to New Heights by Donna Lynn Thomas. Want to make quilts that are striking, look complex, but use an easy folded-corner technique? This is the book for you. The book's projects progress from simpler, confidence building techniques to master level, and shows you how to make striped units without using bias pieces or templates.

Three recently published novels by Jennifer Chiaverini: **The Lost Quilter**, **The Aloha Quilt**, and **The Union Quilters**.



Members have been generous with donations of books, magazines, and other items. Some have been added to our library; most have been offered for sale at meetings, generating funds for new purchases. We've just started with a fresh new batch, so you might find something inspiring or helpful.

See you in December from your librarians Pat Leistner and Linda Karns

BTQG Workshops



The second of Bettina Havig's workshops, Pick Up Six, has been scheduled for Saturday, January 21, 2012 at the Boone County Family Resources Meeting Room (UFO Saturdays have been held there in the past.) The workshop will be from 9:00 am to noon and the room will continue to be available until 4:30 pm. Workshop participants may want to stay and continue to work on their project. All guild members are invited and encourage to use the space also. Registration form for the workshop is included in this newsletter.



The Dawn Heese Workshop is set for Saturday February 6, 2012, 9:00 am to noon during day guild's "sit and sew" time. Add texture to your appliqué with hand dyed wool. Learn the ins and outs of combing wool and cotton for outstanding appliqué projects. Hand dyed wools are fast and easy to work with and add visual impact to your quilt projects. Make a Cherry Reel block combining wool and cotton on a cotton background. Finish your block to create a table topper that can grace your table all year long. Registration form included in the newsletter.

Annie Helmericks-Louder and John Louder Starlight Chapter November Meeting



Annie teaches at the University of Central Missouri. She uses nature to inspire her creative pieces and incorporates a variety textiles and stitching techniques.



Now Smile!!

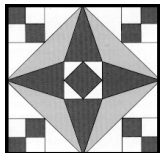
*Barbara Nixon,
BTQG Historian,
provided all of the
photos for the news-
letter.*

Guild Members Show and Tell



On the left Joan Pottinger with a red work piece she recently found in her father's belongings. She said it hung on the wall of their home for years. It was a gift from her father to her mother.

Judy Gieselman found the spirit of Halloween by designing and quilting Jack...he looks very satisfied!



P.O. Box 542
Columbia, MO 65205-542



Birthdays

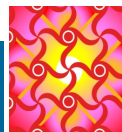
**D
e
c
e
m
b
e
r**

Nancy Toalson	Dec 3
Suzanne Henage	Dec 4
Lou Beasley	Dec 6
Vivian Thompson	Dec 13
Maxine Tate	Dec 14
Bonnie Wakefield	Dec 15
Donna Burris	Dec 17
Marcy Strube	Dec 20



Starlight Piecemakers
Thursday, December 1st
Annual Holiday Celebration
6:00 pm Doors Open
6:30 Potluck Dinner

Fairview United Methodist Church
Bring a Quilt for Show and Tell



Day Chapter

Monday, December 5th
9—12 noon Sit and Sew
with Bidding on Silent Auction Items
12 Noon Holiday Potluck Luncheon
1 PM: Auction followed
by Show and Tell
Fairview United Methodist Church



BTQG is on the Web
[HTTP://BTQG.MISSOURI.ORG](http://BTQG.MISSOURI.ORG)



Our Meeting Place
Fairview United Methodist Church
3200 Chapel Hill Road
Columbia, MO 65203



**PICK UP SIX WORKSHOP
BETTINA HAVIG—INSTRUCTOR
SATURDAY, JANUARY 21, 2012
9:00 a.m. - 12:00 p.m.**

**Boone County Family Resources Meeting Room
1209 E. Walnut Street Columbia, Missouri**

Using fat quarters with strip piecing and cutting you will get a modern, contemporary quilt, no two will look the same. If you can add up to 6 you know all the math necessary to construct this quilt. This workshop is all out fun, no complicated design work and all straight seam piecing. **You can cut fat quarters from your stash. No need to buy new fabric.**

Detach and return registration to:

Lauri Murphy, 3309 Appalachian Drive, Columbia, MO 65203, 573-446-2476, e-mail: laurimurphy@centurytel.net. Supply list will be sent when registration is received.

Registration must be mailed postmarked not earlier than December 21, 2011.

Fee: \$20.00 must be included with registration form. Make check payable to BTQG.
(See BTQG directory for cancellation policy.)

NAME: _____

ADDRESS: _____

PHONE: _____ E-MAIL: _____

*If you don't have e-mail the supply list will be mailed.



**CHERRY REEL WORKSHOP
BY DAWN HEESE
MONDAY, FEBRUARY 6, 2012
9:00 a.m. - 12:00 p.m.
Fairview United Methodist Church**

Add texture to your applique with hand dyed wool. Learn the ins and outs of combining wool and cotton for outstanding applique projects. Hand dyed wools are fast and easy to work with and add visual impact to your quilt projects. Make a Cherry Reel block combining wool and cotton on a cotton background. Finish your block to create a table topper that can grace your table all year long.

Detach and return registration to:

Lauri Murphy, 3309 Appalachian Drive, Columbia, MO 65203, 573-446-2476, e-mail: laurimurphy@centurytel.net. Supply list will be sent when registration is received.

Registration must be mailed postmarked not earlier than January 6, 2012.

Fee: \$22.00 must be included with registration form. Make check payable to BTQG.
(See BTQG directory for cancellation policy.)

NAME: _____

ADDRESS: _____

PHONE: _____ E-MAIL: _____

*If you don't have e-mail the supply list will be mailed.