

Quilt-A-Gram

B O O N E S L I C K T R A I L Q U I L T E R S ' G U I L D

Starlight Piecemakers'
Thur. Dec 2
6:00 PM
Fairview Methodist
Church

We will be having a meal as a part of our December meeting, beginning at 6 pm, with the program starting at 7 pm. The guild will provide the meat and drinks, with members bringing sides and desserts. There will be items for sale left from our quilt show market and items brought by members. Be sure to bring items to donate to the auction. Remember that your donation can be a service (such as quilting or binding a quilt, cooking a meal, etc.), baked goods, or anything else that would appeal to a quilter. REMEMBER, THE DINNER STARTS AT 6 PM!

Dawn, Dennis & Marilyn

Day Chapter
Monday-Dec 6
12:00PM
Fairview Methodist
Church

Wow, what a wonderful group of quilters. I so enjoyed seeing all the talent at the quilt show.

Coming in December is our holiday potluck and auction. For those of you coming for sit and sew starting at 9:00, we will be having lunch starting about 12:00. For those who usually come at 1:00 please remember to come an hour earlier with your food dish and eat with us. We ask that you bring your Christmas quilts, we will be hanging them around the room to admire, and would like you to share them as a show and tell.

Wear your Christmas sweaters, antlers, or Santa hats, whatever makes you happy.

Here are the potluck guidelines: Last name starting with:

- | | | | |
|-------|-------------|-------|----------------------------|
| A - D | Salads | E - H | Finger foods or appetizers |
| J - P | Main dishes | Q - Z | Desserts |

If you have a basket, Laura will be taking them at the door. If you have something else you would like to auction and it is NOT in a basket, that is fine as well. Please bring it, and thank you all for sharing the time and money to donate something for our guild. Please come with a basic idea of a starting bid for your item, it gives us a place to start. Roughly guesstimate the cost of the contents. We will have about half the items for silent auction and the other half as a live auction. If you feel strongly about which way you want your item auctioned say so at the door. The auction will start about 12:45 if we are done eating.

Dawn Heese will also be signing her book at this meeting so come prepared to purchase a copy and support our local talent! Dawn also wants to remind everyone that will be attending her scalloped edge workshop in January to be getting that quilt done, so that you can bring the almost-finished quilt with you to learn the scalloped-edge technique. Bettina will be having the program on Amish quilts in January.

Tammy



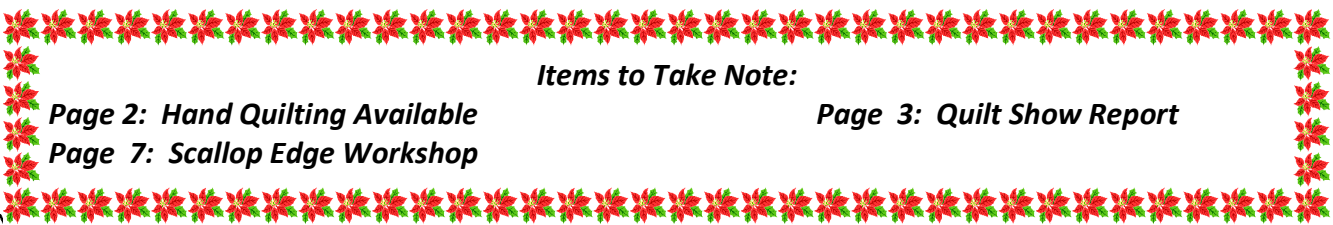
Congratulations on a Great Quilt Show!

I would like to extend my personal thanks to Carrol Lewis for her able leadership, to Dawn Heese and her willingness to help Carrol, to Mona Stevenson for the extraordinary success of the Guild Marketplace, to Brenda Austin for the success of the Silent Auction, and to all the folks who took time, out of there busy schedules, to make this a great quilt show, especially the Hus-

Items to Take Note:

Page 2: Hand Quilting Available
Page 7: Scallop Edge Workshop

Page 3: Quilt Show Report



QUILT-A-GRAM

Published monthly by Booneslick Trail Quilters' Guild, a not-for-profit organization, established in 1978, and dedicated to educating its members and the community in the art and appreciation of quilt making.

2010-2011 BTQG Executive Board

CEO Chairman:	Alice Leeper	573-489-1458
Vice-Chairman:	Joan Westcott	573-874-8160
Secretary:	Lauri Murphy	573-446-2476
Treasurer:	Mary Pilkenton	573-442-2416
Publications :	Linda Sappington	573-657-9445
Quilt Show:	Carrol Lewis Dawn Heese	573-657-4532 573-234-1540
Librarian:	Linda Karns Pat Leistner	573-874-0288 573-446-0811
Web Page:	Linda Sappington Willie Morris	573-657-9445
Historian	Vacant	
Winter Retreat	Brenda Austin	573-657-2332
Bare Bones Retreat	Nancy Antonio	573-445-6604
Service Project:	Joan Pottinger Cecile Mazan	573-881-9463 573-698-2008
Past CEO	Nancy Antonio	573-445-6604

Day Chapter Board

President:	Tammy Bush	573-256-8350
Vice-President:	Marilyn Smith Barbara Bauman	573-387-4463 573-445-2071
Secretary:	Boo! Kula	573-4490346
Membership:	Nancy Ankeney	573-445-6583
Hospitality:	Brenda Austin Pat Abrams	573-657-2332 573-657-2317
Friendship Blocks:	Laura Eggeman	573-449-7942
Past President:	Cindy Green	573-239-0029

Starlight Piecemakers Board

President:	Dawn Heese	573-234-1540
Vice-President:	Dennis Smith Marilyn Russell	573-445-7787 573-874-5702
Secretary:	Willie Morris	573-445-4217
Membership:	Peggy Queathum Diana Fisher	573-445-7689 573-875-1086
Hospitality:	Irmgard Marsh	573-230-6196
Friendship Blocks:	Robin Heider	573-446-6254
Past President:	Alice Leeper	573-489-1458

 * BTQG EMAIL ADDRESS: BTQGfeb1978@yahoo.com *

Regular meetings of the Guild are held on the first Monday of the month at 1:00 pm and the first Thursday of the month at 7:00 pm at the Fairview United Methodist Church, 3200 Chapel Hill Rd., Columbia, Missouri.

Annual dues are \$30 for the fiscal year of July 1 to June 30. Dues are payable on July 1st.

Newsletter deadline is the Wednesday after the Executive Board Meeting at 5:00 pm, of each month.
 Email items to: BTQGfeb1978@yahoo.com



NO UFO DAY in DECEMBER
Will resume on January 15, 2011

 *** FRIENDSHIP STARS ***
 Cindy Green's is the contact person for coordinating the notification of members who might need a star.
 A friendship star can be sent to someone sick, under the weather, dealing with problems greater than themselves, etc.
 Contact Cindy Green: cinbin76@yahoo.com
 573-239-0029
 Suggested guidelines are: All stars shall be done with an off-white background.

TREASURE'S REPORT
 Submitted by Mary Pilkenton

Checking Acct. Balance	\$20,904.73
Savings	1033.10
CD's (2)	10,773.64
Balance	\$32,671.47
Number of Members	202

HAND QUILTING !!!

For anyone interested in having your tops hand quilted by Amish quilters.... They are ready to have more tops brought for quilting.
 Summer chores are past, the canning and harvesting are done and there is time for quilting.
 Please contact me for more information.
 Bettina Havig, 573-449-1602
 or email bettinaqc@socket.net



QUILT SHOW-UPDATES !!!

Every time we have a quilt show I am astounded at the talent we have in this guild. I have looked at several shows over the last couple of years while getting ready for this show and you are absolutely the best. The show you created was beautiful. If you listened to the crowd as they walked through, you would have heard wonderful comments on the quality of your work. The quilt show committee wants to thank all the participants and workers for your time and efforts.

Mary Pilkenton has put together our fiscal numbers and attendance numbers (798) for this show and they are included in this newsletter.

Quilt shows are easier to produce if you keep the flow going from year to year, so we are now looking for someone to chair the 2012 show. I have some names of people who indicated on their membership forms this year they would be interested in being on the show committee so the chair will have a base to begin. This year's committee will be glad to share what we learned as we went along. Please give this some thought and see Alice Leeper. It's not that bad of a job - jump in - you'll enjoy it. Thanks to everyone - it was great.

CARROL

Thanks to everyone who made items to fill the Marketplace. We had quite an array of merchandise, which garnered many compliments from our customers. Several people from other guilds were quite impressed. Thanks also to all the volunteers who helped set up, sell and pack up for the Marketplace. You made a great team!

Mona Stevenson

for the Market Place Committee.

We had a total of 17 items donated for our Silent Auction, and made \$1,000.00. We appreciate the generosity of our members who donated items. We had a nice variety of items, and a great group of bidders, who made our auction successful. I am attaching the information on the items we auctioned, the opening bid, closing bid, and the person who purchased each item.

Brenda

BTQG Quilt Expressions 2010					
Nov. 6-7, 2010					
(includes income & Expenses from 2009)					
				Income	Expense
Stoney Creek Inn Rent Deposit					\$1,450.00
Set Up	Pipe & Drape				\$1,236.00
	Ahrens Steel & Welding				\$219.93
Stoney Creek Vendor Lunches/ Svc Chrg			\$169.40		\$667.06
Event Insurance					\$315.00
Signs/Misc Supplies					\$452.12
Vendor Booth Rent (17)			\$1,600.00		
Program Booklet (1500 copies)					\$339.65
Advertising:	Country Register				\$525.00
	Columbia Daily Tribune				\$416.00
	VOX				\$175.00
Artwork (Joseph Roesch)					\$100.00
Postcards					\$169.59
Quilt Show T-Shirts			\$895.00		\$789.00
Admissions (798)			\$3,975.92		
Market Place			\$4,236.80		\$25.86
	Consignments				\$170.45
Quilt Raffle			\$1,049.00		\$216.97
	Sol House Donation				\$400.00
Sewing Machine Raffle			\$865.00		\$54.00
Silent Auction			\$1,000.00		
Gift Basket Raffle			\$43.00		
	TOTALS		\$13,834.12		\$7,721.63
	NET PROFIT		\$6,112.49		

QUILT SHOW-UPDATES !!! (CONT.)

Silent Auction List of Items - 2010				
No.	Donated By	Type of Item	Closing Bid	Purchased By
1	Redwork Group	Wall Hanging Quilt	\$55.00	Brenda Austin
2	Carrol Lewis	Wall Hanging Quilt	60.00	Marilyn Smith
3	Joan Pottinger	Crocheted Afghan	25.00	Sarah Samson
4	Kathryn Jones	Accent Pillow	35.00	Mary Ann Wiles
5	Shirley Beckett	Wall Hanging Quilt	40.00	Merril Winfield
6	Applique Group	Quilt	325.00	Donna Burris
7	Cindy Green	Jewelry set	10.00	Marilyn Russell
8	Cindy Green	Jewelry	7.00	Donna Baker
9	Cindy Green	Jewelry set	15.00	Patti Doyle
10	Mona Stephenson	Quilters Calculator	16.00	Brenda Austin
11	8 BTQG Quilters*	Quilt	130.00	Brenda Austin
12	Karon Huggler	Wall Hanging	95.00	Marilyn Smith
13	Mona Stevenson	Yo-Yo Wall Quilt	70.00	Judy Nemmers
14	Mona Stevenson	Felted Wool Purse	30.00	Marie Sloan
15	Frances Cope	Advent Calendar	30.00	Brenda Austin
16	Sally Johnson	Purse	25.00	Marilyn Russell
17	Sally Johnson	Cutting Mat	32.00	Brenda Austin
Total			\$1000.00	
*Betina Havig, Nancy Antonio, Boo! Kula, Lauri Murphy, Emma Jo Raines, Marilyn Russell, Fay Sharp, Alice Snyder				

QUILT SHOW-RAFFLE WINNERS !!!

Opportunity Quilt: Cindy Logsdon (Camp Point, IL)

Janome Sewing Machines: Faye Sharp, Cindy Greene & Paula Bone (Jeff City)

Quilt Show Chocolate Bark Mona Stevens Makes about 30 2" pieces (about 2 lbs.)

- 1 lb. bittersweet chocolate chips (Ghiradelli)
- 3 2.1 oz. Butterfinger candy bars, cut into irregular 1" pieces
- 3 1.4 oz Heath toffee candy bars cut into irregular 3/4" pieces (I omitted these)
- 8 .55 oz. peanut butter cups, each cut into 8 wedges
- 1/4 c. roasted peanuts - honey-roasted are recommended
- 3 oz. Peanut M&Ms or Reese's pieces

Line baking sheet with foil. Melt chocolate chips in microwave according to package directions. Spread on foil-lined baking sheet to about 1/4" thickness, which should be about a 10" X12" rectangle. Sprinkle with Butterfinger candy, toffee, peanut butter cups and peanuts. Make sure all pieces touch melted chocolate. Scatter M&Ms or Reese's over top and press into chocolate. Chill until firm, about 30 minutes. Slide foil onto a work surface. Peel off foil. Cut or break bark into irregular pieces. Enjoy!



★★★★★★★★★★★★★★★★★★★★
★ VIEWER'S CHOICE ★
★★★★★★★★★★★★★★★★★★★★

The Story of

"Felicity: An Extreme State of Happiness

When you come to the stone gate at our country place, there is a bronze plaque that says "Felicity". The word means, "a state of extreme happiness". That is my feeling about our home that sets on a lake hidden far back in the woods.

On a fall day in 2008, I took a long walk. Autumn had created a pallet of delightful colors, and I wanted to savor the beauty forever! For

hours I was picking leaves from the wide variety of our trees, and from these the idea and design was created. My hope is that my love of life, and worship of our awesome Missouri natural beauty, will show through in this quilt.

The fabrics were dyed, then hand painted, and some were commercial fabrics which I cut, using the actual leaves as patterns. The creative part came with choosing colors, painting, spattering, and veining the leaves. The dark strips began with the flow of vines, and then came the placement of the groupings of Oaks, Sassafras, Dogwood, Cottonwood, and Tulip, to name a few.

The quilt was two years in the making, with help from my sister, Joy Combs, of Muncie, IN. Then the cream panels were added, and the overlaps designed and stitched, the size now becoming voluminous, making the tiny stitches more difficult to sew. September 8, 2010 the quilt was delivered to Tammy Bush to be artistically machine quilted.

I think that one of the reasons for the success of the design was the use of a "color wheel". Even though as an experienced artist, I am familiar with the use of colors, all the time I was adding vines, berries, and dots, the color wheel was nearby to help assure the best choices.

The next leaf quilt is ready to sew on these long Winter evenings. This one is somewhat smaller but just as colorful.

Susan Kelley



Day Chapters' November's --- Friendship Block Winner !!!

Hi, I'm **Laura Eggeman**. I grew up in St. Louis, and came to Columbia as a biochemistry student at Mizzou, and where I got a student-worker position. I met my chemist-husband and married him. After I graduated I worked for a while in the same lab when I got the opportunity to attend graduate school in computer science.

In a moment of insanity, we bought the apartment complex in which we lived. Nobody else would buy it since most of the apartments were in great need of repair. For quite a few years I managed the apartments and worked as a computer programmer. I was laid off as a result of 9-11 and have been only managing our apartments ever since. We enjoy living among students--they keep us feeling young!

I've always liked quilts, but didn't try making one until I decided we needed a new something for our bed, about 15 years ago. That quilt ended up being lap-sized and still hangs over the foot of our bed. I'm really slow at finishing quilts, probably because I also play viola and grow orchids and always seem to have a project of some sort, but do finish them eventually. I especially like to hand piece and quilt, but do use my sewing machine.

The block I selected is from the October, 2005 Quilters' Newsletter Magazine and uses a technique called "Counterpoint Fusing," which makes for a really, really easy block. It involves a bit of ironing, tracing around your hand, cutting, a little more ironing, and signing your name. My husband talked me into using black and white fabrics like in the pattern and even went fabric shopping with me. I'm providing the white prints, so dig around for a square of a black print! I'm really excited about making a quilt with the help of lots of willing hands!

December CALENDAR 2010

Guild related or sponsored activities are included in the Master Calendar.

BOARD & CHAPTER EVENTS

Date	Time	Event	Place & Contact
2-Dec	7:00 PM	Starlight Piecemakers' Mtg. Doors open 6:00 pm	Fairview Methodist Church Dawn Heese 573-234-1540
6-Dec	9:00 AM	Day Chapter Quilt & Sew	Fairview Methodist Church Tammy Bush
6-Dec	12:00 PM	Day Chapter Mtg - Lunch at 12:00 pm	Fairview Methodist Church Tammy Bush 573-856-8350
13-Dec	6:30 PM	Executive Brd Meeting MEMBERS WELCOME!	Public Library Alice Leeper 573-489-1458
14-Dec	3:00 PM	Day Chapter Board Meeting	Library Tammy Bush
15-Dec	6:30 PM	Starlight Piecemakers Board Meeting	Library Dawn Heese
15-Dec	5:00 PM	Newsletter Deadline	Linda Sappington 573-657-9445

SPECIAL INTEREST GROUPS

6-Dec	9:30 AM	Pushing the Limits Row by Row Group	Library Jackie Berry 660-263-5429
9-Dec	9:30 AM	Sassy Stitchers (day appliqué)	Library Sally Russell 573-443-5479
9-Dec	1:00 PM	English Paper Piecing	Linda Sandlin/Joan Westcott 573-814-1629
NO Meeting	1:30 PM	Quilt History Interest Group	<u>January 13, 2011 Mtg. Home of:</u> Bettina Havig 573-449-1602
15-Dec	7:00 PM	Sometimes 30's Group	Jane Lee 573-445-4623
15-Dec	6:30 PM	Lucy Boston Paper Piecing	Linda Sandlin/Joan Westcott Library 573-239-1882
20-Dec	1:00 PM	Handmade Quilts	Linda Sandlin 573-814-1629
MO Meeting	10:00 AM	UFO Sit & Sew - NO December Meeting	Dawn Heese 573-234-1540 Boone Co Family Support Ctr 1209 E Walnut
NO Meeting	6:30 PM	Night Appliqué	Library Joan Westcott 573-874-8160
NO Meeting	9:00 AM	Redwork Group	Myrna Powers 573-445-0766

Scalloped Edges Workshop given by Dawn Heese
Monday, Jan. 3, 9 am to noon
Fairview United Methodist Church

Name _____

Address _____

Phone _____

Dawn asks that you bring your quilt, any size, already quilted, to the workshop and she will show how to make the scalloped edges.

Send this form with a check for \$20 made out to BTQG to:
 Barbara Bauman, 3703 Woods Edge Rd., Columbia, MO 65203
 Supply list will be provided after registration is received.



CALENDAR OF AREA EVENTS—2011

- | | |
|-------------|---|
| Jan. 3 | Dawn Heese, Day Chapter Workshop — “Scalloped Edges” |
| Feb 18-20 | BTQG Retreat, Rickman Center , “TNT” |
| April 4 | Kathy Delaney, Day Chapter Workshop—“The Mariners Compass is Our Friend” (drafting only) |
| April 27-30 | AQS Quilt Show, Paducah, KY,
http://www.americanquilter.com/shows_contests |
| May | Karla Menaugh Workshop, “Mock Hand Applique by Machine”,
Day & Starlight Piecemakers Chapter s’ joint program |

STYLE CLUES IN DATE-INSCRIBED QUILTS

(Word has it— that our Quilt History Special Interest Group will be using this as an outline for their discussions.)
(interested in Quilt history contact Bettina Havig, January 13, 2011, meeting at Bettina Havig’s home)

Quilt detectives will want this update to my classic book *Clues in the Calico*. The 2011 digital newsletter features the newest information about American quilt style. In a weekly email we’ll look at changes in patchwork fashion, interpreting the past by examining quilts with dates actually inked or stitched on them.

The 2011 series, 20 weekly issues, begins in January. We’ll start with the 18th century and progress through 1960, a decade at a time. Each PDF newsletter contains color photos and links to see more quilts online.

Cost: \$20 Mail checks to: Barbara Brackman, 3115 W 6th St. #C -237, Lawrence, KS 66049
PayPal: Send \$20 to Barbara’s email: BBrackman@sunflower.com
 However you pay —Be sure to enclose your email address!
 If you subscribe late I can supply back issues or start a new rotation to catch you up.

Computer Requirements

Email with 1 megabyte downloading capability Adobe Acrobat PDF capability (Download this for free)

Questions? Email Barbara: BBrackman@sunflower.com
Sample Issue For a free sample check Barbara’s blog *Material Culture*
<http://barbarabrackman.blogspot.com/>



P.O. Box 542
Columbia, MO 65205-0542



WE'RE ON THE WEB
[HTTP://BTQG.MISSOURI.ORG](http://BTQG.MISSOURI.ORG)



**DECEMBER
BIRTHDAYS**

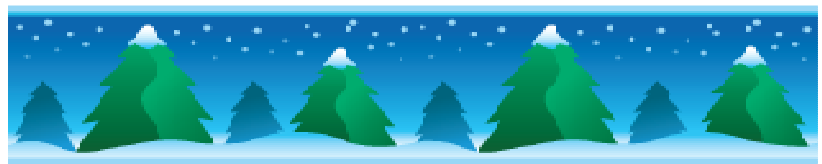
Christy	Gray	Dec 03
Nancy	Toalson	Dec 03
Suzanne	Henage	Dec 04
Linda	Rexroth	Dec 13
Vivian A.	Tompson	Dec 13
Maxine	Tate	Dec 14
Bonnie	Wakefield	Dec 15
Donna	Burris	Dec 17
Marcy	Strube	Dec 20
Clare	Melick	Dec 29

**STARLIGHT
PIECEMAKERS**

Fairview Methodist Church
Thursday - Dec 2 - **6:00 pm**
Holiday Dinner & Auction
Dinner at 6:00 pm

DAY CHAPTER

Fairview Methodist Church
Monday—Dec 6—**12:00 pm**
Holiday Lunch & Auction
Lunch at 12:00 pm
Doors open at 9:00 am



OUR MEETING PLACE

Fairview United Methodist Church
3200 Chapel Hill Road
Columbia, MO 65203