

Quilt-A-Gram

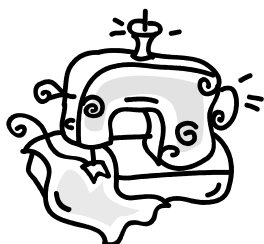
B O O N E S L I C K T R A I L Q U I L T E R S G U I L D

SPECIAL POINTS OF INTEREST:

- Day Chapter Program
- Starlight Piecemakers Program
- Perkiomen workshop, Saturday, February 13, 2010.
- AQS Paducah bus trip, April 2010
- BTQG Quilt Show, November 6-7

INSIDE THIS ISSUE:

CEO Letter	2
Affiliate Program	2
Library	3
Calendar	4
Service Project	6
Birthdays	8
Quilt Shows to Visit	9



The Guild Service Project will be our focus at the February Day Chapter Meeting. We will open the doors at 9:00 a.m.

So get those sewing machines, thread, seam rippers, cutting board and iron with a ironing board. You may need to bring an electrical cord

DAY CHAPTER

and power strip since there are only a few plugs in the room. Look at the Service Project news article for anything else that is needed.

This will be a soup and salad luncheon meeting. So you may bring your favorite and share it with the members. The board will provide the fixings to make cold sandwiches.

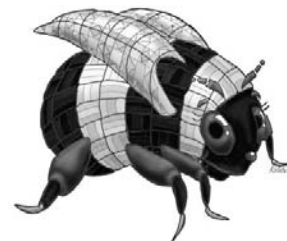
Remember this will be the first month for the Fat Quarter Drawing. You can bring up to 5 fat quarters and for each

one you will get your name in the drawing. The theme for this month is red.

Good luck!

Cindy and Brenda

Submitted by Cindy Green



STARLIGHT PIECEMAKERS

Due to the cancellation of the January meeting we will include Martha Eberhard's presentation with our February program. In addition we will have the scheduled program emphasizing and spotlighting our library. Our presenters will be talking about our library's appliqué, piecing, fiction and history/reference books. Both parts of the meeting will be very informative... be there!

And we will have the magazine and book sale. Here's the scoop--bring any magazines or books that you no longer want to make room for at home. Magazines will be 50¢, soft back books will be \$2 and hardbound books will be \$3-5 depending on the book. Nothing will carry over. Anything left over will be donated to the public library. The tables will be set up by 6 p.m. You can shop before the meeting

and at brief break between our program topics. This is a wonderful way to share your unwanted magazines and books. Proceeds will be used by the chapter for ongoing expenses.

Alice and Bettina

Submitted by Bettina Havig



C E O L E T T E R

Seems like we all have had quite a vacation from our meetings.

Come on back!

We have some interesting programs and workshops planned. I have found out as CEO that this is a busy group. If you need to find some fun groups check out the interest groups. Each of them welcome new members; Just give the resource person a call to check the location. That is the place

to share quilting tips, patterns and inspirations February is a short month but it is filled with fellowship and information. February 1 is a whole day of quilting, soup lunch, and working together on service project quilts. This is also a great day to get further acquainted with other members. We need your help to continue to meet the need for quilts in our community. Thursday night we will be learning about our quilts. We

sometimes forget that they are valuable beyond our love for them. Check the front page for full details. Our workshop with expert quilter Bettina Havig is beginning a quilt that is one of my personal favorites. The Perkiomen should be in everyone's repertoire. It has such versatility in design and perfect for a planned color or scrap quilt. It's on a Saturday. Hopefully that is good day for you. There may be a few

spots.

The Lucky Retreat goers should be checking their folders and getting their projects together. I know Linda Sappington and her committee has planned some fun activities, but most of all plenty of time to quilt.

Nancy Antonio
CEO

A community depends on each of its members.

“So shop away and earn money for the guild at the same time!”

S H O P A N D M A K E M O N E Y F O R B T Q G !

For those of us who sometimes shop online, here is some great news!

BTQG has been accepted as affiliates for 3 great retailers. joanns.com - fabric.com - createforless.com

What this means is the BTQG gets a percentage (6% to 8%) of everything purchased from these retailers when their site is reached through the links on the homepage of the BTQG website. *So shop away and earn money for the guild at*

the same time!

Like to touch the fabric before you buy? Fabric.com has a 100% satisfaction guarantee and free return shipping so you have nothing to lose.

Remember – you must get to the retail sites through the links on our website for the guild to get credit for your purchase. It's easy, just go to <http://btqg.missouri.org/> and click on the links on the right.

NOTE: The Booneslick Trail

Quilters Guild encourages our members to shop locally in support of our wonderful local retailers. However, if you do shop online, please consider using the links provided on the BTQG website to support the fundraising efforts of our guild.

Submitted by
Christy Gray



B R E A K T H E R U L E S – D O N ' T B E S E W P E R F E C T



Quilt Police

Ever heard of the quilt police? I don't think there is an official organization yet, but there are plenty of

people who are willing to do the job for free. I'm sure you know who I'm talking about. There are those who are out there judging the rest of us for not sewing accurate 1/4 inch seams, not using matching thread, not using 'quality' fabric, etc. Well they might as well

arrest me now. I am guilty on all accounts from time to time. If you are new to quilting and you encounter the QP please do not let them intimidate you. It is impossible for us all to be sew perfect. For those who feel they must act as the QP, please grant the rest of us a

break unless we are in a competition or we have specifically requested your opinion. It just plain takes all the fun out of it and that is why we are doing this right?

Happy sewing!
Reprinted with permission
Submitted by Christy Gray

A D D I T I O N A L I N F O R M A T I O N

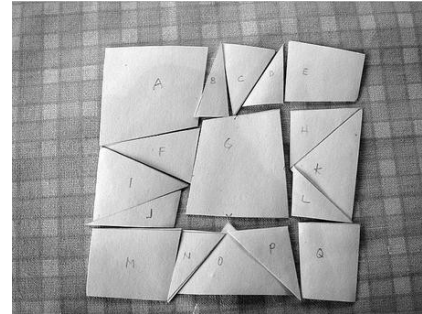


Of interest....

Just a reminder--registration is still open for the Perkiomen Nine Patch workshop on Saturday, Feb13. Please refer to your January newsletter or go to our website for complete information. The workshop is open to both members and non-members.
Submitted by Bettina Havig

Go online to <http://www.allpeoplequilt.com> and check out their instructions for both English Paper piecing and for Foundation piecing. The illustrations and instructions are well done. These are both topics in which people have expressed an interest.

Submitted by Bettina Havig



B U S T R I P T O T H E A Q S Q U I L T S H O W A T P A D U C A H I N A P R I L

Here I am writing this note for the Newsletter, talking about April in Paducah when the temperature has been a high of 7 degrees for today. Oh! How I would love to be at the AQS quilt show in Paducah in the wonderful spring weather. I remember how beautiful their spring flowers are every year.

It seems early, but it is definitely time to be making plans for this spring show. Break-

Away Tours (Howard Wolf) will be taking a bus again this year. The travel dates are April 20th - 23rd. We will be leaving Columbia on Tuesday, returning on Friday. The cost will be \$285 per person based on double occupancy with \$75 due by March 1 and the final payment due by April 1. This cost is very reasonable considering it covers all transportation, lodging, admission to the quilt show and of course, shop-

ping at Hancock's of Paducah.

I will have handouts at both February meetings with more detailed information regarding this trip. Please start thinking about attending this great show.

Submitted by Joan Westcott

AQS quilt show in Paducah!!!

L I B R A R Y N E W S

1.

One new book added this month:
The Ultimate Quilting Book, by Maggie McCormick Gordon
This book has many different helpful techniques for quilting.

2.

Ever go antiquing and find vintage blocks or a vintage quilt top and wonder the age of the fabrics?
Vintage Quilts by Aug, Newman and Roy has pictures and helpful info for dating and evaluation of prices.

3.

If you need a good book to curl up with on a cold night we have nine Jennifer Chiaverini books.



Curl up with a good book from the Guild Library

Judy & Willie

Submitted by Judy Gieselman

TREASURER'S REPORT

Submitted by Christy Gray

Booneslick Trail Quilters' Guild

Treasurers Report

July through December 2009

	<u>Jul - Dec 09</u>
Ordinary Income/Expense	
Income	
40000 · Membership Dues	6,540.00
41200 · Program Income	12,729.00
41500 · Fundraising Income	4,584.61
47400 · Direct Public Support	
47450 · Cash Contributions	61.00
Total 47400 · Direct Public Support	<u>61.00</u>
Total Income	23,914.61
Expense	
61200 · Program Expense	
61240 · Lectures / Workshops	2,124.30
61250 · Travel and Lodging	4,457.69
61260 · Materials and Supplies	550.56
Total 61200 · Program Expense	<u>7,132.55</u>
61500 · Fundraising Expense	1,873.50
62800 · Facilities and Equipment	
62820 · Rent and set up	1,810.00
Total 62800 · Facilities and Equipment	<u>1,810.00</u>
65000 · Operations	
65010 · Books, Subscriptions	151.43
65020 · Postage, Mailing Service	356.88
65030 · Printing and Copying	1,455.01
65040 · Supplies	178.00
Total 65000 · Operations	<u>2,141.32</u>
68100 · Contract Services	
68140 · Legal Fees	10.00
68170 · Membership Dues	130.00
Total 68100 · Contract Services	<u>140.00</u>
Total Expense	<u>13,097.37</u>
Net Ordinary Income	<u>10,817.24</u>
Net Income	<u>10,817.24</u>

Checking balance \$ 14,412.88
 Money Link \$ 1,032.70
 Certificates of deposit \$ 10,671.46

Paid members as of 12/31/2009 218



FEBRUARY CALENDAR

Submitted by Dawn Heese

Feb. 1	9:00 am	Day Chapter Guild	Fairview Methodist Church Doors open early
Feb. 1	1:00 pm	Day Chapter Guild Mtg	Fairview Methodist Church Contact: Cindy Green
Feb. 4	7:00 pm	Starlight Piecemakers	Fairview Methodist Church Contact: Alice Leeper
Feb. 8	6:30 pm	Executive Bd Meeting	Contact: Nancy Antonio
Feb. 9	9:30 am	Day Chapter Bd Meeting	Contact: Cindy Green Public Library
Feb.9	6:30 pm	Starlight Piecemakers Bd Mtg	Contact: Alice Leeper ReMax Rm 130
Feb. 10	5:00 pm	Newsletter Deadline	Contact: Rona Duncan
Feb. 11	9:30 am	Sassy Stitchers (day appliqué)	Library Contact: Donna Burris
Feb. 11	1:30 pm	Quilt History Interest Group	Library Contact: Bettina Havig
Feb. 15	1:00 pm	Handmade Quilts	Contact: Linda Sandlin
Feb. 16	9:30 am	Charm Group	Library Contact: Kay Shoner
Feb. 17	7:00 pm	30s Group	Contact: Jane Lee
Feb. 18	6:30 pm	Adventurers Group	Contact: Angie Weithman
Feb. 22	6:30 pm	Night Appliqué	Library Contact: Joan Westcott
Feb. 25	9:30 am	Redwork Group	Contact: Myrna Powers

JANUARY FRIENDSHIP BLOCK-DAY

Hi, my name is Janet Espeleta. I'm thrilled to have been chosen as the first Friendship block winner for 2010. My husband, Larry, and I moved to Boonville in late December of 2008 from Las Vegas, NV to live closer to our youngest daughter, who lives in Blackwater. We have been married for 30-1/2 years and have 4 kids & 8 grandkids.

I learned to quilt in 1990 while recuperating from back surgery. I was living in Austin, TX at that time and became very active in the local quilt guild there. Prior to learning how to quilt I loved to do cross stitch, plus also knitted and crocheted. Quilting really took a hold of my heart though and since

then I have made more quilts than I can keep track of. We moved to Las Vegas, NV in 1994 and I started teaching beginning quilting in 1995, which I love to do. I have written some mystery quilt patterns and taught these to some online groups as well as local ones. I have won ribbons with some of my quilts, but only on a local level. At this point I have not attempted to enter any of them on a national level and don't know if I ever will. I have also been quoted in two issues of "Quilter's Home" magazine for articles regarding quilt shows as I was the quilt show chairman in 1999 for one of the guilds in Las Vegas.

The block I have chosen goes by

two names. It is called "The Hour Glass" block in Electric Quilt 6 and "Buckeye Beauty" that can be found at <http://www.quilterscache.com>. It is a great block for using up scraps, which is why I chose it as I love scrappy quilts. It is a very easy block made up of only 2 half square triangle units and 2 four patches. I will have some kits and directions available at the February meeting, as well as a couple of samples posted to show what the block looks like. Thanks to everyone who will end up making me a block.

Happy Quilting,

Janet

QUILT SHOW

There are 278 days left to get our quilt show plans completed. We need two pieces of information from the quilt members.

First on the agenda is the decision regarding the charity to receive our donation from the raffle quilt. This will hopefully be finalized at the February Executive Board meeting. If anyone has an idea for a needy local charity (preferably one that does

not get a lot of government support) please let us know. The Quilt committee will be discussing this at their next meeting on February 4.

Our second issue is advertising. Where do you go to find information about shows or shop hops that you attend? Some will require our information several months in advance. It's now time to get our advertising going and we don't want to miss any

venues that are open to us. You're our best source of information.

The January Market Place item was a tablerunner. Mona had several kits ready but the weather cancelled some of our plans. Please stop by her table and pick up a kit. These are quick to complete and needed badly for our merchandise.

Thanks for all your help.
Submitted by Carrol Lewis

*"You're our
best source
of
information."*

HANDBOOK UPDATES

Ida Mae Anderson
(new e-mail address)
Andida.anderson@gmail.com

Kristin Kunze (May 2)
(New Member)
1315 London Dr.
Columbia, MO 65203
573-442-7911 (h)

Carol Jo Perry
13500 Rangeline Rd.
Ashland, MO 65010
573-657-1388(h);
573-819-1871(c)
Cperry6@hotmail.com

Submitted by Jan Oehrle

SERVICE PROJECT UPDATE

Quilter, now that Christmas has gone we may have some time on our hands. We are asking you to step up to the plate and help us. There are about seven kits to make a quilt or finish what was started and some are very easy. We have about six quilt tops to be TIED or quilted, some large and some small.

I have been busy quilting a lot of tops and they now need binding and labels. Please help us out!!!! Also

we are in need of some twin size batting for these quilts. If you would like to donate some that would help. We have a lot of small pieces but it would be easier for us not to have to sew them together to make one big one. Please do not donate the high loft because it is too hard to work with. I thank you all for the help you have given so far, just remember what you give will come back to you two fold.

Submitted by Cecile Mazan

We're really looking forward to the Day Chapter's Service Projects Workday at the February meeting. We hope to have fun, maybe make a few new friends, with lots of chatter and laughter to accompany the pieces we will produce.

We've chosen an easy block to do, "Berkley Square", as well as

setting all the bingo blocks from last month's meeting on point as a square-in-a square and then assembling them into several quilt tops.

For each bingo block setting square, we will need a pair of 8 1/2" squares, so if you have some scrap material suitable for background setting squares, please bring it along to add.

The Berkley Square block uses 2 fabrics that contrast and straightforward easy piecing. Bring a few spare fat quarters or any scraps at least 15" x 22" (15" x width of fabric) and we will also have a lot of donated pieces from our stash.

Additionally, we'll have some quilts ready to be tied or bound, so bring needles, thread, and thimbles if that is what you'd like to do.

Things to bring:

You may want to buddy up, with one cutting, one pressing, and one sewing and not everyone bring everything listed.

- Sewing machine, iron and pad
- Cutting board and rotary cutter
- Scissors and normal sewing accessories
- Rulers: 12 x 6 or 8; 18 x 6; 15" square or larger, if you have one
- Spare Fat quarters or 15" x 22" scraps of fabric for Berkley Square blocks
- Pairs of 8 1/2" squares to use for backgrounds for bingo blocks

See you at the workday!
Joan Pottinger and
Cecile Mazan

Submitted by Joan Pottinger

*"We are in
need of some
twin size
batting"*

CORRECTED MINUTES FROM SPECIAL BUSINESS MEETING 12/05/2009

A special business meeting was called by CEO, Nancy Antonio, for December 5, 2009. The meeting was held at 9:30 a.m. at Fairview United Methodist Church. The Bylaws changes as published in the newsletter were presented. A motion was

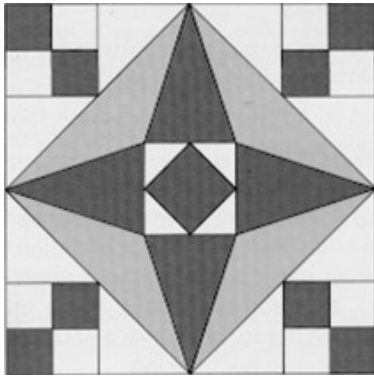
made by Pat Leistener seconded by Sandy Womack to accept the changes to the bylaws as proposed by a committee that had been appointed by Nancy Antonio. Present at the meeting were 63 members of the Quilters' Guild. A show of hands was called and the

revisions passed unanimously. The meeting was adjourned.

Respectfully submitted,
Boo! Kula
Acting Secretary



MISSION STATEMENT



*Booneslick Trail Quilters Guild
Bylaws
Article 1
Section 3*

The purpose of the Booneslick Trail Quilters Guild shall be to promote fellowship among persons interested in all aspects of quilt making; to preserve our quilt making heritage and traditions; to promote an appreciation of fine design and workmanship; to encourage quilt making and collecting; to participate in quilt-related projects that are of service to the community; and to contribute to the knowledge of quilt making techniques, textiles, patterns and quilt makers through education.

HISTORIAN REPORT

The historian records contain two videos that have been converted into DVDs for the guild library. Check these out when you get a chance.

One is a wonderful guild program presented and taped on January 7, 1993. It is a 15 year celebration of BTQG titled "The Great Firsts" and presented by

Bettina Havig, Donna Baker and other early guild members.

The other DVD is 1991 BTQG Quilt Show, featuring most of the quilts and some related activities and booths. Both are great items for viewing.

Sharon Lawler, historian

*"Two videos
that have
been
converted into
DVDs"*

WARMEST THANK YOUS TO MY GUILD FRIENDS

I have such a warm place in my heart for the guild members. My nieces surprised my husband Larry and I with a card shower to honor our 40th wedding anniversary in December. We received many cards from my guild friends and others. Those sneaky nieces found BTQG's web site and contacted Rona requesting the card shower

announcement. What a wonderful gift, to be handed that stack of cards. Thank you to you wonderful quilting friends. This thoughtfulness means so much to me and Larry.

Sharon Lawler



*Thank
you*

WE'RE ON THE WEB
HTTP://BTQG.MISSOURI.ORG



P.O. Box 542
Columbia, MO 65205-0542

**Booneslick Trail
Quilters Guild**

**F E B R U A R Y
B I R T H D A Y S**

Trish Hilgedick	Feb 02
Boo! Kula	Feb 02
Janet Sampson	Feb 02
Sandy Womack	Feb 05
Carrol Lewis	Feb 06
Marilyn Kirby	Feb 07
Nancy Ankeney	Feb 09
Rona Duncan	Feb 10
Kathleen Benish	Feb 12
Dianne Riley	Feb 12
Zede Donohue	Feb 13
Willie Morris	Feb 14
Beverly Wyatt	Feb 14
Cindy Bryan	Feb 15
Elaine Hocks	Feb 19
Helen McCord	Feb 25
Nina Watts	Feb 26
Janet Espeleta	Feb 28
Joan Westcott	Feb 29

**D A Y
C H A P T E R**

February 1

1:00 pm

Service Project Workday

**S T A R L I G H T
P I E C E M A K E R S**

February 4

7:00 pm

Insuring your quilts

Library Review

O U R M E E T I N G P L A C E

Fairview United Methodist Church
3200 Chapel Hill Road
Columbia, MO 65203

QUILT SHOWS TO VISIT
FROM "THE QUILT SHOW"
NEWSLETTER

Every year, the quilting world hosts a wide range of great exhibitions and festivals, and 2010 will be no exception. Whether your love is needlework history, fine traditional handwork, or amazing art quilts, you'll find something to suit your taste among the following exhibits coming this spring.

Fiber and Beyond
Works of collage fusion by Jean Wells and Alma De La Melena Cox
January 4 - March 1, 2010
Latimer Quilt & Textile Center
<http://www.latimerquiltandtextile.com/index.html>
Tillamook, OR

Fiberistic Journeys
Art quilt works by Ann Fahl, Annette M. Hendricks, Denise Havelan, Rachel Wetzler, Beth P. Gilbert, Kathleen Schroeder, and Robbi Joy Eklow
January 24 - March 21, 2010
Anderson Art Center
<http://www.andersonartscenter.com/index.htm>
Kenosha, WI

Mournful Maidens: Love and Loss in American Embroidery
Embroidered works that focus on love and loss made by American schoolgirls of the 18th and early 19th century
Now through February 21, 2010
Baltimore Museum of Art
<http://www.artbma.org/exhibitions/index.html>
Baltimore, MD

Stay at Home and Use Me
Well~Flax and Fleece: Fiber to Fabric
View a collection of tools and the processes used in textile production for the American home and farm during the late 18th and 19th centuries

Now through Fall 2010
National Museum of the American Coverlet
<http://www.coverletmuseum.org/calendar.htm>
Bedford, PA

Main-Quiltfestival
<http://www.main-quiltfestival.de/Home.82.0.html>
February 19 - 21, 2010
Aschaffenburg, Germany

"The Celtic Fringe: Wholecloths of Wales and Scotland" and "Namad: A Persian Journey in Felt"
Two exhibits show the contrast in decorative traditions between the UK and Iran featuring quilts native to Wales and Scotland as well as richly embroidered Turkoman designs from Persia
Now through March 20, 2010
Quilt Museum and Gallery
<http://quiltmuseum.org.uk/>
York, England

Aiguille en Fete Show
<http://www.aiguille-en-fete.com/>
For lovers of all things regarding needlework; be sure to visit the costumes from the Opera of Paris and the Comedie Francaise
February 11 - 14, 2010
Porte de Pantin, Paris

Tokyo International Great Quilt Festival
<http://www.tokyo-dome.co.jp/e/quilt/>
Nine days of fabric, thread, quilts, and more in the Tokyo dome
January 15 - 23, 2010
Koraku, Bunkyo-ku, Tokyo



WHAT'S
HAPPENING

Feb 13, 2010—Perkiomen Workshop

Feb 19-21, 2010—BTQG February Retreat

April 21-24, 2010—AQS Quilt Show, Paducah, Kentucky.
www.AmericanQuilter.com

June 25-27, 2010 - Common Thread Quilt Show 2010, June 25-27, Century II, Wichita, KS. Presented by the Prairie Quilt Guild.

Nov 6-7, 2010—BTQG QUILT SHOW!!!

KALONA QUILT
SHOW AND SALE

Just a reminder to put the Kalona Quilt Show and Sale on your calendars!

Kalona Quilt Show and Sale 2010
Thursday, April 22, Evening Only 5pm-8pm
Friday, April 23, 9am - 7pm
Saturday, April 24, 9am - 5fapm

Located at the Corner of 6th & D.Ave. in the Kalona Community Center
Downtown, Kalona, IA.

Over 300 New and Antique Quilts on Display and for Sale.
Sponsored by the Woodin Wheel and Kalona Antique Co.
for info :
Call 319-656-2240
email katie@woodinwheel.com

Regular meetings of the Guild are held on the first Monday of the month at 1:00 pm and the first Thursday of the month at 7:00 pm at the Fairview United Methodist Church, 3200 Chapel Hill Rd., Columbia, Missouri. Annual dues are \$30 for the fiscal year of July 1 to June 30. Dues are payable on July 1st. Newsletter deadline is the Wednesday after the Executive Board Meeting at 5:00 pm, of each month. Email items to : Rona Duncan at rona_duncan@juno.com.

QUILT-A-GRAM

Published monthly by Booneslick Trail Quilters' Guild, a not-for-profit organization, established in 1978, and dedicated to educating its members and the community in the art and appreciation of quilt making.

2009-2010 BTQG Executive Board

CEO /Chairman:	Nancy Antonio	573-445-6604
Vice-Chairman:	Dawn Heese	573-234-1540
Secretary:	Barbara Nichols	573-657-9595
Treasurer:	Christy Gray	573-814-2301
Publications:	Rona Duncan	573-874-1280
Quilt Show:	Carrol Lewis Dawn Heese	573-657-4532 573-234-1540
Librarian:	Willie Morris Judy Gieselman	573-445-4217 573-445-2381
Historian	Sharon Lawler	573-696-0102
Retreat Chair	Linda Sappington	573-657-9445
Service Project:	Joan Pottinger Cecile Mazan	573-443-5303 573-698-2008
Web page Editor:	Rona Duncan	573-874-1280
Day Chapter Pres:	Cindy Green	573-239-0029
Evening Chapter Pres:	Alice Leeper	573-489-1458

Day Chapter Board

President:	Cindy Green	573-239-0029
Vice-President:	Brenda Austin	573-657-2332
Secretary:	Sandy Moritz	573-442-3777
Membership:	Betty White Christy Gray	573-696-3776 573-814-2301
Hospitality:	The A Team	
Friendship Blocks:	Barb Nichols Sandy Moritz	573-657-9595 573-442-3777
Past President:	Dawn Heese	573-234-1540

Starlight Piecemakers Board

President:	Alice Leeper	573-489-1458
Vice-President:	Bettina Havig	573-449-1602
Secretary:	Marilyn Russell	573-874-5702
Membership:	Terri Crane Myrna Powers	573-447-3040 573-445-0766
Hospitality:	Linda Karns Pat Leistner	573-874-0288 573-446-0811
Friendship Blocks:	Tammy Bush Imgard Marsh	573-256-8350 660-395-9458
Past President:	Linda Sappington	573-657-9445

For Sale:

Husqvarna Viking Mega Quilter and Inspira quilting frame, \$2000. Opened but not used. Please contact Beverly Wyatt at 573-442-4968 for more information.

Katydid

Designs Studio

Longarm Quilting Service
Custom Embroidery Design



With our Statler equipped Gammill we offer computer precision stitching, low cost and fast turn around.

4804 Maple Leaf Dr
Columbia MO 65201

Christy Gray - Owner/Designer
(573) 256-Katy Call anytime for more information

www.katydidonline.com christy@stabilestitches.com

Form and Function Custom Quilting By Tammy Bush

Please call for a booking or pricing quotes.
2900 Conestoga Ct.
Columbia, Mo 65203
573-256-8350 (h) /
573-529-1729 (c)

Zede's Sewing Studio

(573) 875-2500 | www.SewHere.com

BERNINA®

baby lock

Inspiration

NEXT EXIT 



Appletree Quilting & Viking Center Guild Appreciation Discount For BTQG Members

On the day of each of the two Booneslick Trail Quilters' Guild monthly meetings, Appletree Quilting & Viking Center will offer guild members a 20% discount on non-sale fabric (1/2 yard minimum). Please present your BTQG membership card to take advantage of this offer.